

SDG Dashboard

This is the approved revision of this page, as well as being the most recent.

The printable version is no longer supported and may have rendering errors. Please update your browser bookmarks and please use the default browser print function instead.



Contents

Purpose

IFs Platform

SDG Overview Table

- Main Display

- Other Features

 - Custom Targets

 - Use Groups

 - Save Table

 - Link to SDG Graph Dashboard

 - History Only Indicators

SDG Graph

- Main Display

- Other Features

 - Continue

 - File

 - Global Summary

 - Causality

 - Graphics

 - Use Groups

 - Display Options

 - About SDGs

Scenario Analysis Capability

- Contraception Use Increase Scenario

- Transfers Increase Scenario

- Contraception and Transfers Scenario

- Comparing Scenarios Using the SDG Forms

Annex 1: SDG indicator classifications aligned with IFs variables

Purpose

In September 2015, the global community adopted the Sustainable Development Goals (SDGs) to end poverty, protect the planet, and ensure prosperity for all. Each of the 17 goals contains specific targets (169 in all), which are aligned with indicators (232 in all) to track progress towards achieving the 17 SDGs. Reaching the global goals requires an ability to forecast these indicators, an understanding of how the indicators interact with each other and global trends, and an ability to explore the trade-offs and complementarities of interventions made in the pursuit of the targets. In an effort to build these capacities, the Frederick S. Pardee Center for International Futures, in collaboration with the United Nations Development Programme's (UNDP) Bureau for Policy Programme Support, has created an interactive dashboard with two displays to explore progress towards the SDGs.

The International Futures (IFs) system forecasts hundreds of variables that represent 14 goals, 45 targets, and 50 indicators of the SDGs. In some cases, multiple IFs variables match with the same indicator, so there are 94 variables we forecast in IFs that align with SDG indicators. Some targets have numerical values in the IFs dashboard that reflect the language of the indicator with which is associated (e.g. "eradicate extreme poverty"). Users of the system can also specify or change target values for all 94 variables. In addition, the dashboard includes 204 historical data series from the UN Statistics Division's (UNSD) Global SDG Indicators Database. These series were added to IFs for Tier 1 indicators[1] for which there were no matching series in IFs (see documentation here). Neither numerical targets nor forecasts are currently available for these "history only" variables.

IFs Platform

The Frederick S. Pardee Center for International Futures is a non-profit, academic research center within the Josef Korbel School of

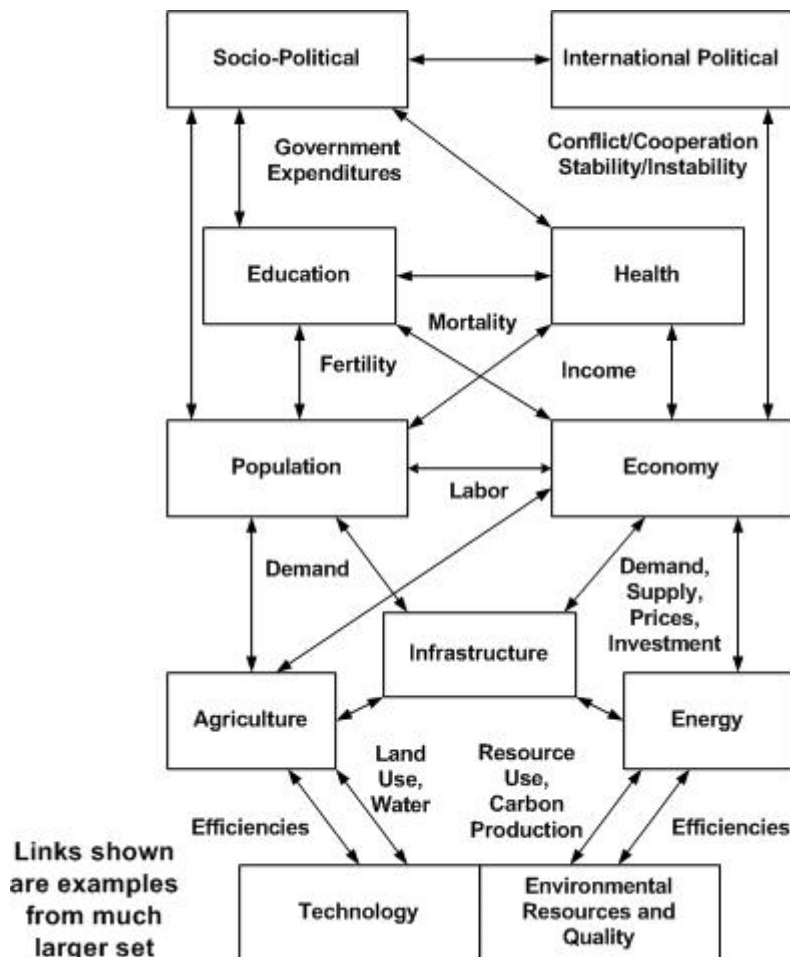


Figure 1: Visual representation of the International Futures (IFs) sub-modules and some of the ways they interact.

International Studies at the University of Denver, and home to the International Futures (IFs) forecasting system. IFs is a long-term, global, highly-integrated collection of models that allows users to explore and understand our collective future. The system forecasts development patterns for a wide array of indicators ranging from health and education to economics and international interactions. Below is a block diagram illustrating the different models explicitly represented in IFs.

IFs uses our best understanding of global systems, a database of over 4,000 time-series, and relationships between variables that are found to be both statistically significant and conceptually sound to produce forecasts for 186 countries to the year 2100. Of the hundreds of variables forecast in the model, 94 align with indicators identified in the SDGs. Using the 94 indicators that align with variables in the model, we have built an interactive dashboard that allows users to see how these variables could change over time.

Many of the variables that we forecast in IFs align well with the SDG indicators. However, some variables are similar but slightly different either in terms of the measurements or their precise definitions, and in some cases multiple IFs variables can represent the same indicator. In the attached annex (Annex 1), a complete table of the SDG indicators is matched with the variables we forecast in IFs along with the data we use to initialize these variables. Where there is some disagreement between the indicator and the forecast variable, we've made notes describing the difficulty and the method used to address it.

SDG Overview Table

Main Display

Within the International Futures system, we developed a display to track a country or region's progress towards achieving all the SDG targets that we forecast. The display can be accessed by clicking the "Display" tab on the home screen of the model, choosing the "Specialized Displays for Issues" sub-option, and then selecting the "SDG Overview Table". Below is an image of the current (IFs version 7.31) dashboard.

Indicators	2015	Reference Scenario 2030	Intervention Scenario 2030	Target Value
Goal 1: POVERTY				
Indicator 1.1.1a - Percentage of population below \$1.25 (2005\$ PPP) per day, Lognormal	0.6716	0.8241	0.8241	0.6716
Indicator 1.1.1b - Percentage of population below \$1.90 (2011\$ PPP) per day, Lognormal	2.834	3.071	3.071	2.834
Indicator 1.2.1a - Percentage of population below \$2 (2005\$ PPP) per day, Lognormal	10.67	10.48	10.48	5.335
Indicator 1.2.1b - Percentage of population below \$3.10 (2011\$ PPP) per day, Lognormal	10.66	10.48	10.48	5.33
Indicator 1.a.1a - Transfers as % of total government expenditures	50.82	53.41	53.41	
Indicator 1.a.1b - Transfers as % of GDP	12.72	13.92	13.92	
Indicator 1.a.1c - Transfers in Billion \$	164.8	263.4	263.4	
Indicator 1.a.2a - Percentage of total government spending on essential services (education, health)	33.67	32.03	32.03	
Indicator 1.a.2b - Government spending on essential services (education, health) as % of GDP	8.425	8.349	8.349	
Indicator 1.a.2c - Government spending on essential services (education, health) in Billion \$	109.2	158	158	
Goal 2: HUNGER				
Indicator 2.1.1a - Percentage of undernourished population	1.5	1.304	1.304	1.5
Indicator 2.2.1a - Prevalence of stunting (height for age <2 SD) among total population	3.231	2.995	2.995	3
Indicator 2.2.1b - Prevalence of stunting (height for age <2 SD) in working age population	3.231	2.973	2.973	3
Indicator 2.2.2a - Percentage of malnutrition (weight for height <2 SD) among children under 5	2.5	2.389	2.389	2.5
Indicator 2.2.2c - Severe Acute Malnutrition (weight for height <3 SD) among children under 5	0.4	0.4663	0.4663	0.4
Indicator 2.4a - Percentage of land dedicated to crop	13.23	12.89	12.89	
Indicator 2.4b - Percentage of land dedicated to grazing	41.69	40.35	40.35	
Goal 3: HEALTH				
Indicator 3.2.2 - Infant mortality rate in deaths per thousand newborns	17.8	11.99	11.99	12
Indicator 3.3.1a - HIV cases as percentage of population	0.1509	0.2019	0.2019	0
Indicator 3.3.1b - AIDS death rate as percentage of population	0.0048	0.0058	0.0058	0

Figure 2: Screenshot of the home screen of the Sustainable Development Goals Set of the International Futures (IFs) system. Data and forecast shown for Mexico in the Base Case.

At the top of the dashboard, the user can select a country to view. The user can also vary the year to use for the different SDG targets. The default target year is 2030, as that is the target year for most SDG targets.

The user may view both a "reference scenario" and an "intervention scenario". The default setting is to have the Base Case (IFsBase.run) as the reference scenario. The Base Case, or the "current path" is a future where current policies hold and there are no major shocks to the system. The default setting for the intervention scenario is the working file, which is identical to the Base Case unless an alternative scenario is selected. The user may create and run different scenarios (see scenario analysis capability section below) and view changes relative to the Base Case using this dashboard.

Each of the SDG indicators that we forecast in the IFs system is listed on the left side of the dashboard. They are grouped according to their associated goal. The next column is the 2015 value, which is either taken from data, or estimated in the model. The next column, "reference scenario 2030" shows the value in 2030 for the scenario selected as the reference scenario. The third numerical column, "intervention scenario 2030" shows the value in 2030 for the scenario selected as the intervention scenario. The final column, "target value", shows the target value identified from the SDGs. Where the target is

ambiguous, we have not included an explicit target value (see annex 1: SDG indicator classification, for details on each target), but the model user has the option to input a custom target.

Targets are displayed as the value that the variable would need to be for that country to achieve the SDG for the associated indicator. The UN uses two types of target for the SDGs, relative and absolute targets. While absolute targets are universal[2], relative targets are country-specific, calling for an increase or decrease in the value of the indicator by a set amount or proportion relative to the baseline value for that country. For example, halving the number of injuries and deaths from traffic accidents between 2015 and 2030. In the SDG Table, the value displayed for absolute targets can also vary. If the country has already achieved the target, the most recent value for that country is displayed in the target column rather than the target value. It is possible to see whether a target is absolute or relative and the target's set value by clicking on the number associated with the target. This will open a dialogue box that displays the target value and indicates whether it is relative or absolute and which allows the user to manipulate the target.

Other Features

Custom Targets

The SDG Table includes a custom target feature because some of the SDGs targets are ambiguous and because global goals can be interpreted differently at the country level. In the table, the user can also change the target value or add in a target value where none exists for any of the variables listed on the form. By selecting the target value, an option appears to "edit target". By choosing this option, the user will be shown a form where they can adjust the target value. The figure below shows the form that will appear and allow the user to adjust the target value.

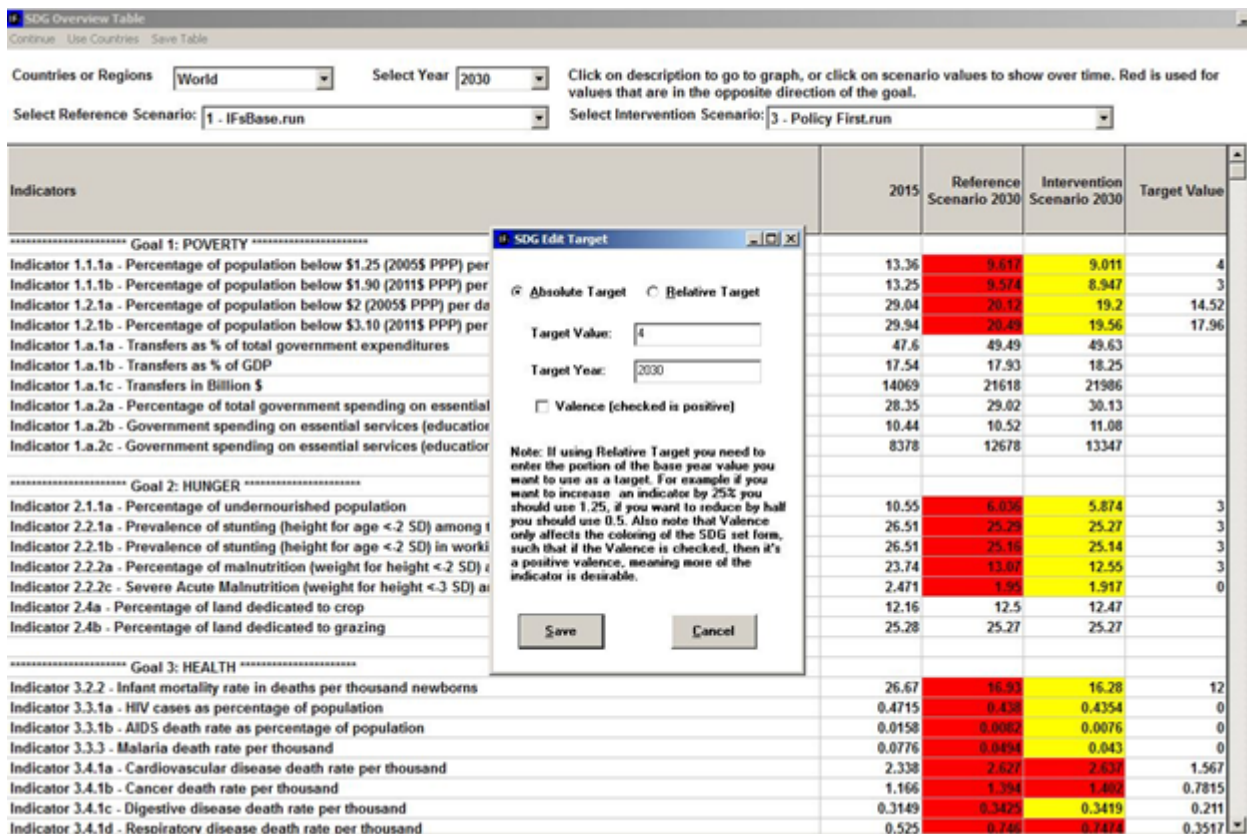


Figure 3: Screenshot of form to edit SDG target for selected indicator.

If the desired target is an absolute number (poverty less than 5 percent, for example) then the correct option to use is the “absolute target” radial button. Then the user can select a target value and a target year to change the target. If the target is a relative target (halve the portion of the population living in poverty) then the correct option to use is the “relative target” radial button. Then the user can select the target value (a portion of the 2015 value of the indicator) and the target year. The valence toggle gives the user the option to change the desired direction of the indicator - if the valence indicator is checked, then the higher the value of the indicator, the closer to the target.

Use Groups

At the top of the screen, the user has the ability to select groups rather than individual countries. The Use Groups selection is a toggle that switches the country dropdown menu to a group dropdown menu.

Save Table

The user also has the ability to “save table” as a CSV file. By selecting any of the numeric values in the first 3 numeric columns (“2015”, “Reference Scenario 2030”, and “Intervention Scenario 2030”) the user will be able to view that data over time. When this option is selected, a table will appear with all the values until 2030.

Link to SDG Graph Dashboard

When any of the indicators are selected from the first column, an option will appear to

“display graph”. This will bring the user to the second SDG dashboard, the SDG graph, described below.

History Only Indicators

The SDG Table has the option of displaying 204 variables for which forecasts are not currently available and that were added to the IFs database specifically for the SDG dashboard. These “history only” series are from the UNSD’s Global SDG Indicators Database, and are the official historical data the UN provides to measure each indicator (see documentation here). To view these historical series, click “Use History Only Indicators” on the SDG Overview Table’s toolbar. Because these variables are not forecast in IFs, only two columns of data appear, “Most Recent” and “Target Value.” Most Recent displays the most recent data point that is available in that series for the country selected. Target Value allows the user to set a target in the same manner described above. These series are included for the user’s reference only, and are not affected by scenarios.

SDG Graph

Main Display

Within the International Futures System, we developed a second display to track the Sustainable Development Goals (SDG). The display can be accessed by clicking the “Display” option on the home screen of the model, then choosing the “Specialized Displays for Issues” sub-option, and then the “Sustainable Development Goals” display. Or it can be accessed from within the SDG Table by clicking on any Indicator line’s text and selecting the pop-up option that says “Display Graph”. Figure 4 is an image of the current dashboard.

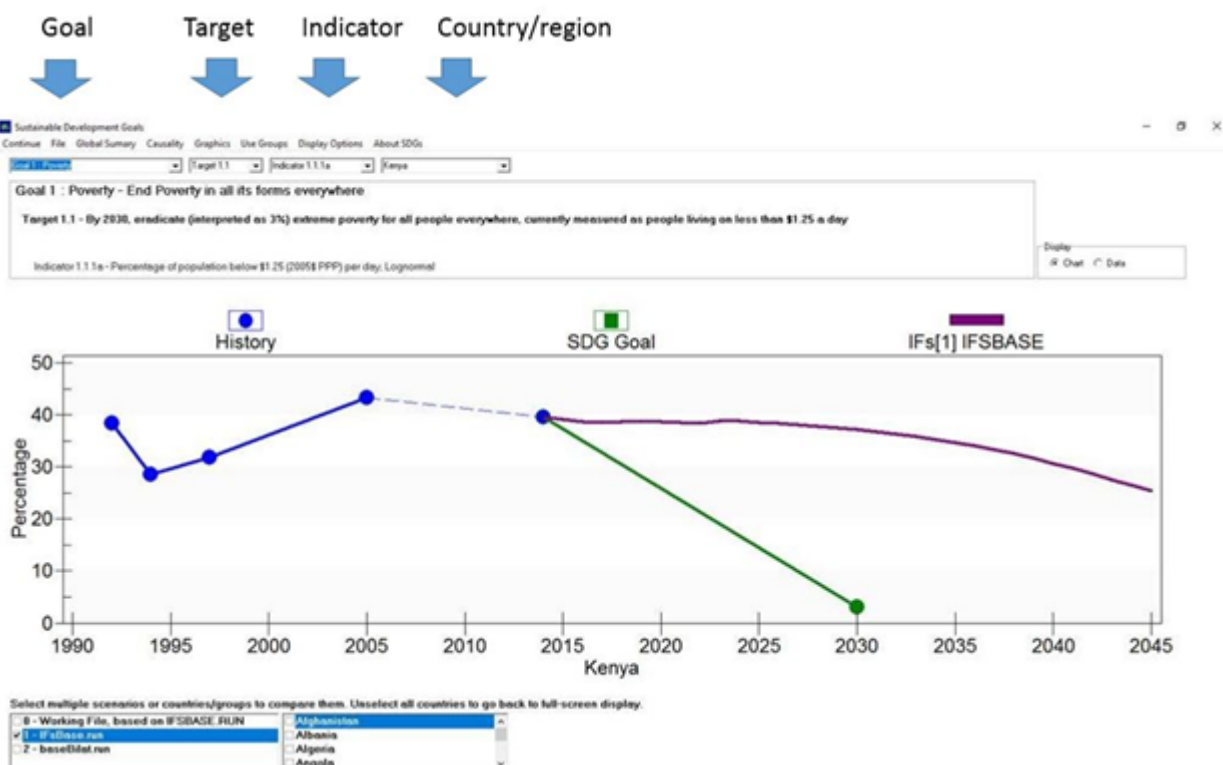


Figure 4: Screenshot of the home screen of the SDG form in the International Futures (IFs) model.

Display of SDG goal 1, target 1.1, indicator 1.1.1a for Kenya.

The user can choose from the 17 SDG **goals** in the top-left drop-down list. Once the goal is selected, the user can choose from different **targets** in the next drop-down list (to the right of the goal list). Once the target is selected, the user can choose from a selection of **indicators** in the next drop-down list (to the right of the target list)—some SDG indicators link to multiple variables in IFs with letters (a, b, c, etc.) to identify each variable. The final drop-down list on the right allows the user to select the **geographic area** to display. The default setting shows all 186 countries of the IFs model as the geographic regions, but the user can change the settings to use groupings of countries or decomposed regions by clicking “Use Groups” at the top of the form.

For any selected indicator/variable, 3 time-series are shown on the display: History, SDG Goal, and the scenario line (defaulted to be the IFs “Base Case”). The “history” plot shows historical data for the selected indicator. Data points appear as blue dots connected with a solid blue line. The first value of the forecast (2015) is also represented by a blue dot; however, the line connecting historical data and the initial 2015 value is a dashed line, rather than a solid line. This is because the 2015 value is an initialization and is not necessarily a data value.

The Goal Path displays a straight line from the 2015 value to the 2030 target value. The scenario line (defaulted to “IFsBase”, or the Base Case) shows the forecast values for the selected scenario. The user may change the scenario using the scenario list in the bottom left corner of the display.

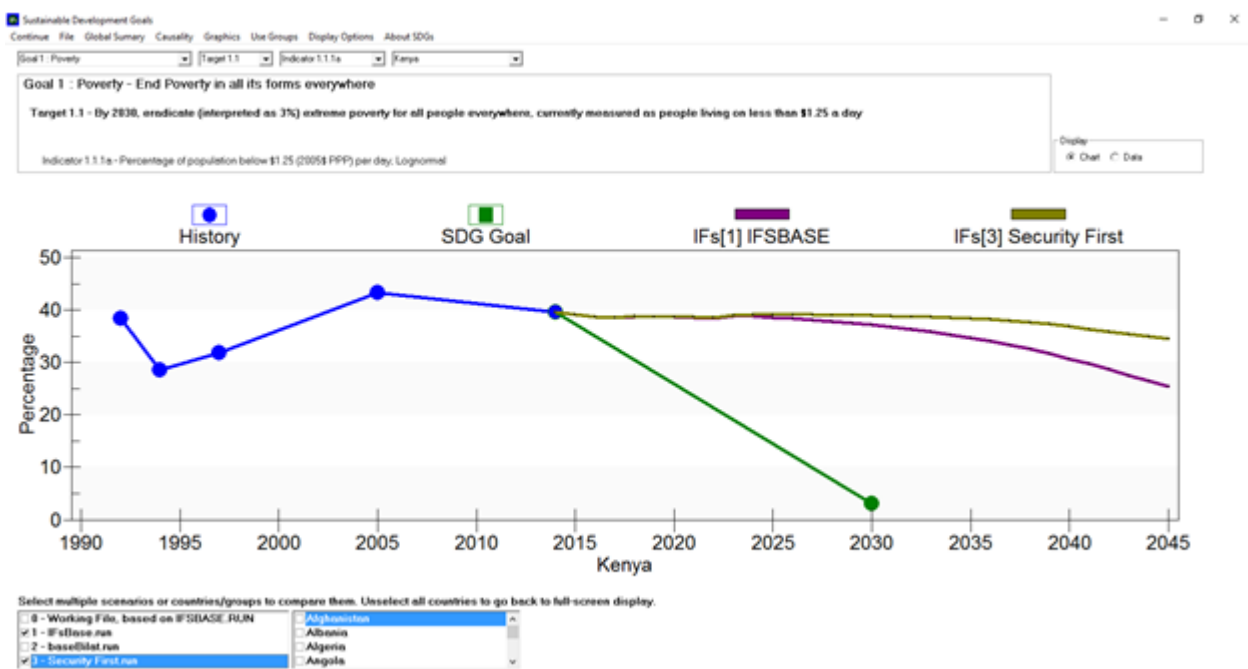


Figure 5: Poverty reduction in Kenya in 2 different scenarios.

The bottom left corner of the form gives the user the option to view multiple scenarios simultaneously. Figure 5 shows the same indicator as displayed in Figure 4, but with 2 scenarios selected: the Base Case, and a “Security First” scenario. In the Security First scenario, Kenya is even further away from achieving the SDG than in the Base Case.

The box to the right of the scenario selection display is a list of geographic areas (countries or country groups). This gives the user the ability to view the same indicator for multiple

geographic regions simultaneously. Figure 6 shows the same indicator and scenario (Base Case) for 6 different African countries.

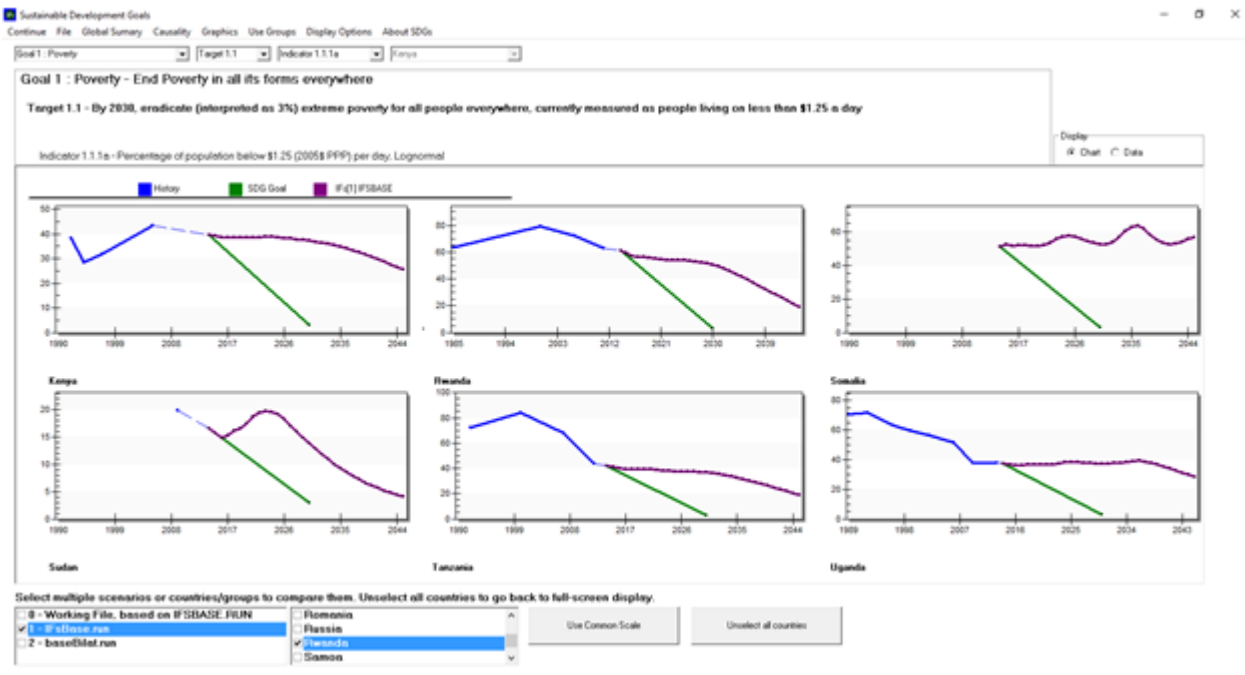


Figure 6: Poverty forecasts for six different African countries.

Other Features

Continue

This closes the display and allows the user to continue back to the home screen to explore other displays or sectors of development.

File

This option allows the user to either export (save) the graph currently displayed, or print the graph. Once "export graph" is selected, the user may choose which file type to export (EMF, WMF, BMP, JPG, PNG, text/data). The user may also choose the size of the file to export.

Global Summary

This option allows the user to select "Global Map" which displays the selected indicator on a global map. The map is colored based on the selected indicator, with higher values represented by darker colors.

Causality

This option allows the user to view the variables which most directly impact the selected indicator. Once "causality" is selected, a "block diagram" will appear with the selected indicator in the middle. The variables to the left of the selected indicator represent variables

in IFs that directly impact the indicator. The variables to the right of the indicator represent variables which are directly impacted by the indicator. By double-clicking on any of the blocks, the user can “follow” the chain of causality from one variable to the next to better understand the way different variables affect each other in the IFs system.

From this screen, the user can save the block diagrams in the “display” drop down options on the toolbar. The user may also show definitions of the variables by choosing “Variables” from the toolbar and then selecting “Show Definitions”.

Graphics

This option allows the user to make cosmetic changes to the display. The user can choose to show the graph’s title, make the graph monochrome (black and white) and make other customized changes. From the “Customize” display, the user can change all aspects of the graph (the font size, the axis labels, the line types, etc.).

Use Groups

This option is a toggle that changes the display to show groups of countries rather than individual countries. The user may select any group already defined in the model. The user may also create their own group using the “Manage Groups/Countries/Regions” option from the “Extended Features” tab from the home screen.

Display Options

This option allows the user to change the time horizon for the graph by changing either the first year or the latest year to display. The latest year by default is 2030 and the earliest year by default is 1990. By increasing the latest year, the user can see how the forecast changes past 2030. By decreasing the earliest year, the user can see data (where available) for years before 1990.

About SDGs

This option allows the user to view a list of all the SDGs, more information of the display itself, or to show the selected indicator in the “Self-Managed Display” of the model. The Self-Managed Display provides the most functionality regarding forecasted variables in the model.

Scenario Analysis Capability

The IFs system allows users to create and compare their own scenarios. From the home screen, the user can select the “Scenario Analysis” tab at the top of the screen. The first option, “Quick Scenario Analysis with Tree” will open a form that allows the user to create their own scenario by adjusting different parameters in the model. Below is a brief description of how to create 3 different scenario files.

Contraception Use Increase Scenario

Step 1: Find “contrusm” (contraception use multiplier) by clicking the “parameter search” button at the top of the form and searching for “contraception”. Once found in this screen, select “load”.

Step 2: Select “Using Countries” at the top of the form. The default setting is to use countries as the unit of analysis, but for this example we want to adjust contraception use for the world. Once selected, the user will be given a list of groups. Scroll down to “world” and click the word.

Step 3: Adjust contrusm to 2 by 2030. Select “fully customize” when this parameter is selected. Change the “desired value” to 2, and the years to repeat or interpolate to 15. Then select “interpolate”. Close the immediate window. A notification will appear that reads, “Your customized changes have been added to the scenario tree.” Select “OK”.

Step 4: Save scenario file. Select “Scenario Files” from the top menu, then select “Name and save”.

Step 5: Run scenario. Select “Run Scenario” from the top menu. A notification will appear that reads, “Do you wish to process the parameters in the tree and proceed to running the scenario?”. Select “yes”. Select your time horizon and click “Start run.” For the purposes of this demonstration, choose 2030 as the time horizon.

Step 6: Save run file. Once the scenario is run, click “Scenario Analysis,” and then select the option File Management > SAVE working file as... Save the working file as “Contraception”.

Transfers Increase Scenario

The process for creating, saving, and running the transfers scenario is identical to the process described above, except that you will need to adjust different parameters.

Step 1: Enter the scenario tree by selecting Scenario Analysis > Quick Scenario Analysis with Tree from the home screen.

Step 2: Clear the tree of all adjustments previously made to create the contraception scenario (Scenario files > Clear tree).

Step 3: Find “govhtrnpenm” (government to household pension transfers, multiplier) by clicking the “parameter search” button at the top of the form and searching for “transfers”. Once found in this screen, select “load”.

Step 4: Select “Using Countries” at the top of the form. The default setting is to use countries as the unit of analysis, but for this example we want to adjust contraception use for the world. Once selected, the user will be given a list of groups. Scroll down to “world” and click the word.

Step 5: Adjust govhtrnpenm to 5 by 2030. Select “fully customize” when this parameter is selected. Change the “desired value” to 5, and the years to repeat or interpolate to 15. Then select “interpolate”. Close the immediate window. A notification will appear that reads, “Your customized changes have been added to the scenario tree.” Select “OK”.

Step 6: Repeat steps 1 - 3 for the parameter “govhtrnwelm” - government to household welfare (all non-pension) transfers, multiplier.

Step 7: Save scenario file. Select “Scenario Files” from the top menu, then select “Name and save”.

Step 8: Run scenario. Select “Run Scenario” from the top menu. A notification will appear that reads, “Do you wish to process the parameters in the tree and proceed to running the scenario?”. Select “yes”. Select your time horizon and click “Start run.” For the purposes of this demonstration, choose 2030 as the time horizon.

Step 9: Save run file. Once the scenario is run, click “Scenario Analysis,” and then select the option File Management > SAVE working file as... Save the working file as “Transfers”.

Contraception and Transfers Scenario

Step 1: Enter the scenario tree by selecting Scenario Analysis > Quick Scenario Analysis with Tree from the home screen.

Step 2: Clear the tree of all adjustments previously made to create the contraception scenario (Scenario files > Clear tree).

Step 3: Load both the contraception scenario and the transfers scenario. Click “Add Scenario Components”. This will bring you to the list of saved scenarios. Find the contraception scenario previously made and select “load”. Do the same thing for the transfers scenario.

Step 4: Save scenario file. Select “Scenario Files” from the top menu, then select “Name and save”.

Step 5: Run scenario. Select “Run Scenario” from the top menu. A notification will appear that reads, “Do you wish to process the parameters in the tree and proceed to running the scenario?”. Select “yes”. Select your time horizon and click “Start run.” For the purposes of this demonstration, choose 2030 as the time horizon.

Step 6: Save run file. Once the scenario is run, click “Scenario Analysis,” and then select the option File Management > SAVE working file as... Save the working file as “ContraceptionAndTransfers”.

Comparing Scenarios Using the SDG Forms

Once all of these scenarios have been run and saved, they are visible from the SDG forms. The user can compare progress towards

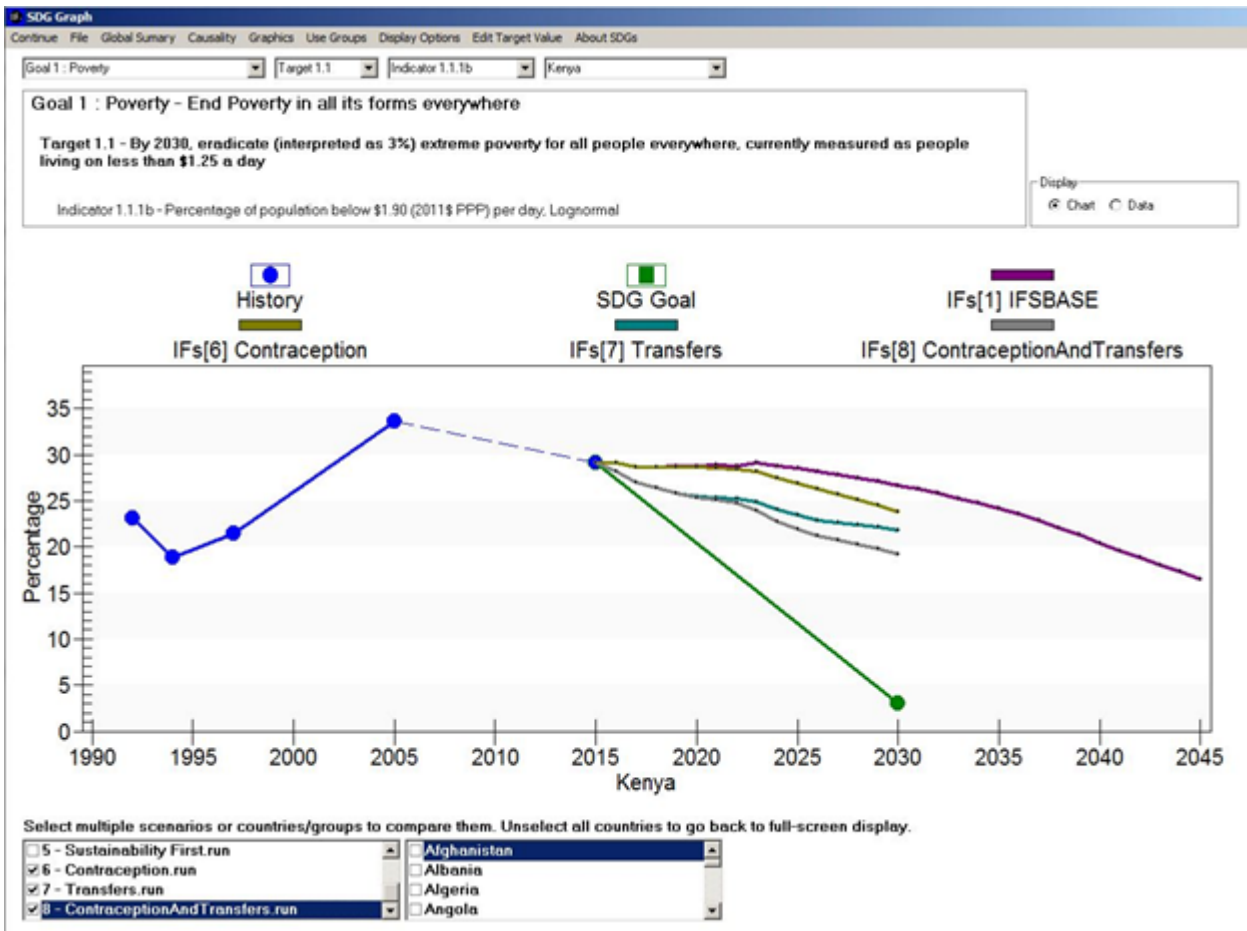


Figure 7: Levels of extreme poverty in Kenya in the Base Case, the Contraception scenario, the Transfers scenario, and the ContraceptionAndTransfers scenario.

achieving different SDGs across any of these scenarios. The screenshot below shows progress towards achieving SDG target 1.1 for Kenya in the 3 different scenarios created above as well as the Base Case. In the Base Case, the portion of the Kenyan population living in extreme poverty (less than \$1.90 in 2011 USD) decreases from 29 to 27 percent from 2015 to 2030. In the contraception scenario, extreme poverty is decreased to below 24 percent. In the transfers scenario, extreme poverty is decreased to below 22 percent. In the combined scenario (both contraception and transfers) extreme poverty is reduced to just over 19 percent. The transfers scenario has a bigger impact, and the effects of the intervention are more immediate, but the trend of the lines suggest that the contraception scenario will have a larger impact past 2030 than the transfers scenario.

The user can view the effects of these interventions on any indicator for any country or region.

Annex 1: SDG indicator classifications aligned with IFs variables

[Note: this table is incomplete. We are currently working on finalizing this table to match the SDG form.]

Tier Classification Sheet (as of 21 December 2016)			
--	--	--	--

Target	Indicator	Variable in IFs	Data used for IFs forecast	Included as a target in form (1 = yes, 0 = no)
Goal 1. End poverty in all its forms everywhere				
1.1 By 2030, eradicate extreme poverty for all people everywhere, currently measured as people living on less than \$1.25 a day	1.1.1 Proportion of population below the international poverty line, by sex, age, employment status and geographical location (urban/rural)	INCOMELT125LN2005: Percentage of population below \$1.25 (2005\$ PPP) per day, log-normal formulation	SeriesIncBelow1D25c%WDI2011: Population below poverty line of \$1.25 per day PPP (2005); World Bank's World Development Indicators	1
		INCOMELT190LN: Percentage of population below \$1.90 (2011\$ PPP) per day, log-normal formulation;	SeriesIncBelow1D90c%WDI: Population below poverty line of \$1.90 per day PPP (2011); World Bank's World Development Indicators	1
		INCOMELT200LN2005: Percentage of population below \$2.00 (2005\$ PPP) per day, log-normal formulation;	SeriesIncBelow2Dollar%WDI2011: Population below poverty line of \$2 per day PPP (2005); World Bank's World Development Indicators	1
		INCOMELT310LN: Percentage of population below \$3.10 (2011\$ PPP) per day, log-normal formulation.	SeriesIncBelow3D10c%WDI: Population below poverty line of \$3.10 per day PPP (2011); World Bank's World Development Indicators	1
1.2 By 2030, reduce at least by half the proportion of men, women and children of all ages living in poverty in all its dimensions according to national definitions	1.2.1 Proportion of population living below the national poverty line, by sex and age			
	1.2.2 Proportion of men, women and children of all ages living in poverty in all its dimensions according to national definitions			
1.3 Implement nationally appropriate social protection systems and measures for all, including floors, and by 2030 achieve substantial coverage of the poor and the vulnerable	1.3.1 Proportion of population covered by social protection floors/systems, by sex, distinguishing children, unemployed persons, older persons, persons with disabilities, pregnant women, newborns, work-injury victims and the poor and the vulnerable			
1.4 By 2030, ensure that all men and women, in particular the poor and the vulnerable, have equal rights to economic resources, as well as access to basic services, ownership and control over land and other forms of property, inheritance, natural resources, appropriate new technology and financial services, including microfinance	1.4.1 Proportion of population living in households with access to basic services			
	1.4.2 Proportion of total adult population with secure tenure rights to land, with legally recognized documentation and who perceive their rights to land as secure, by sex and by type of tenure			

1.5 By 2030, build the resilience of the poor and those in vulnerable situations and reduce their exposure and vulnerability to climate-related extreme events and other economic, social and	1.5.1 Number of deaths, missing persons and persons affected by disaster per 100,000 people			
	1.5.2 Direct disaster economic loss in relation to global gross domestic product (GDP) ^a			
	1.5.3 Number of countries with national and local disaster risk reduction strategies ^a			
1.a Ensure significant mobilization of resources from a variety of sources, including through enhanced development cooperation, in order to provide adequate and predictable means for developing countries, in particular least developed countries, to implement programmes and policies to end poverty in all its dimensions	1.a.1 Proportion of resources allocated by the government directly to poverty reduction programmes	GOVHTRN: Transfers as % of total government expenditures	SeriesGovSSWelBen%Exp: Government Social Security and welfare expenditures as % of total expenditures	0
		Transfers as % of GDP	Same as above	0
		Transfers in billion USD	Same as above	0
	1.a.2 Proportion of total government spending on essential services (education, health and social protection)	GDS: Percentage of total government spending on essential services (education, health)	SeriesGovtHL%GDP: Health expenditures as percent of GDP, public. World Bank's World Development Indicators. SeriesGovtEdPub%GDP: Educational expenditures (public) as percent of GDP. World Bank's World Development Indicators.	0
		Government spending on essential services (education and health) as a percent of GDP	Same as above	0
		Government spending on essential services (education and health) in billion USD.	Same as above	0
1.b Create sound policy frameworks at the national, regional and international levels, based on pro-poor and gender-sensitive development strategies, to support accelerated investment in poverty eradication actions	1.b.1 Proportion of government recurrent and capital spending to sectors that disproportionately benefit women, the poor and vulnerable groups			
Goal 2. End hunger, achieve food security and improved nutrition and promote sustainable agriculture				
2.1 By 2030, end hunger and ensure access by all people, in particular the poor and people in vulnerable situations, including infants, to safe, nutritious and sufficient food all year round	2.1.1 Prevalence of undernourishment	MALNPOPP: Undernourishment as a percent of total population; undernourished population (in millions).	SeriesMalnPop%WB: Percentage of population malnourished. World Bank's World Development Indicators, original source is FAO's State of Food Insecurity in the World Report	1

	2.1.2 Prevalence of moderate or severe food insecurity in the population, based on the Food Insecurity Experience Scale (FIES)			
2.2 By 2030, end all forms of malnutrition, including achieving, by 2025, the internationally agreed targets on stunting and wasting in children under 5 years of age, and address the nutritional needs of adolescent girls, pregnant and lactating women and older persons	2.2.1 Prevalence of stunting (height for age <-2 standard deviation from the median of the World Health Organization (WHO) Child Growth Standards) among children under 5 years of age	HLSTUNT: prevalence of stunting (height for age < 2 standard deviations) among total population		0
		HLSTUNTWORK: prevalence of stunting (height for age < 2 SD) in working age population		0
2.2 By 2030, end all forms of malnutrition, including achieving, by 2025, the internationally agreed targets on stunting and wasting in children under 5 years of age, and address the nutritional needs of adolescent girls, pregnant and lactating women and older persons	2.2.2 Prevalence of malnutrition (weight for height >+2 or <-2 standard deviation from the median of the WHO Child Growth Standards) among children under 5 years of age, by type (wasting and overweight)	MALNCHP: Malnourished children (under 5) as a percent of children under 5.	SeriesMainChil%WeightWB: Percentage of children under 5 malnourished based on weight; US benchmark. World Banks' World Development Indicators, originally from WHO.	1
		MALNCHIL: Malnourished children (under 5)	Same as above	1
		MALNCHPSAM: Children who suffer from severe acute malnourishment (SAM) as a percent of under 5 population.	SeriesSevereWasting: Percentage of children aged 0-59 months who are below minus three standard deviations from median weight-for-height of the WHO Child Growth Standards. From UNICEF/WHO/WBG	1
2.3 By 2030, double the agricultural productivity and incomes of small-scale food producers, in particular women, indigenous peoples, family farmers, pastoralists and fishers, including through	2.3.1 Volume of production per labour unit by classes of farming/pastoral/forestry enterprise size			
resources and inputs, knowledge, financial services, markets and opportunities for value addition and non-farm employment	2.3.2 Average income of small-scale food producers, by sex and indigenous status			

2.4 By 2030, ensure sustainable food production systems and implement resilient agricultural practices that increase productivity and production, that help maintain ecosystems, that strengthen capacity for adaptation to climate change, extreme weather, drought, flooding and other disasters and that progressively improve land and soil quality	2.4.1 Proportion of agricultural area under productive and sustainable agriculture	LD: Percentage of land dedicated to crop	SeriesLandCrop: arable and permanent cropland is comprised of both arable and permanent cropland in a given country for each year. FAO.	0
		LD: Percentage of land dedicated to grazing	SeriesLandGrazing: Grazing land. FAO.	0
2.5 By 2020, maintain the genetic diversity of seeds, cultivated plants and farmed and domesticated animals and their related wild species, including through soundly managed and diversified seed and plant banks at the national, regional and international levels, and promote access to and fair and equitable sharing of benefits arising from the utilization of genetic resources and associated traditional knowledge, as internationally agreed	2.5.1 Number of plant and animal genetic resources for food and agriculture secured in either medium or long-term conservation facilities			
	2.5.2 Proportion of local breeds classified as being at risk, not-at-risk or at unknown level of risk of extinction			
2.a Increase investment, including through enhanced international cooperation, in rural infrastructure, agricultural research and extension services, technology development and plant and livestock gene banks in order to enhance agricultural productive capacity in developing countries, in particular least developed countries	2.a.1 The agriculture orientation index for government expenditures			
	2.a.2 Total official flows (official development assistance plus other official flows) to the agriculture sector			

2.b Correct and prevent trade restrictions and distortions in world agricultural markets, including through the parallel elimination of all forms of agricultural export subsidies and all export measures with equivalent effect, in accordance with the mandate of the Doha Development Round	2.b.1 Producer Support Estimate			
	2.b.2 Agricultural export subsidies			
2.c Adopt measures to ensure the proper functioning of food commodity markets and their derivatives and facilitate timely access to market information, including on food reserves, in order to help limit extreme food price volatility	2.c.1 Indicator of food price anomalies			
Goal 3. Ensure healthy lives and promote well-being for all at all ages				
3.2 By 2030, end preventable deaths of newborns and children under 5 years of age, with all countries aiming to reduce neonatal mortality to at least as low as 12 per 1,000 live births and under-5 mortality to at least as low as 25 per 1,000 live births	3.2.1 Under-five mortality rate			
	3.2.2 Neonatal mortality rate	INFMOR: Infant mortality rate	SeriesInfMortMedUNPD: Medium-fertility variant mortality rate by country, every five years 1955-2010 (infant deaths per 1,000 live births). UNPD World Population Prospects.	1
3.3 By 2030, end the epidemics of AIDS, tuberculosis, malaria and neglected tropical diseases and combat hepatitis, water-borne diseases and other communicable diseases	3.3.1 Number of new HIV infections per 1,000 uninfected population, by sex, age and key populations	HIVCASES	SeriesHealthUNAIDSTotalHIVMidEst: Mid-range estimate of number of total population with HIV. UNAIDS.	1
		AIDS death rate as a percent of the population	SeriesHealthUNAIDSDeathsMidEst: Mid-range estimate of number of deaths from AIDS. UNAIDS.	1
	3.3.2 Tuberculosis incidence per 1,000 population			
	3.3.3 Malaria incidence per 1,000 population	Malaria death rate	All death rate data come from WHO's Global Health Estimates.	1
	3.3.4 Hepatitis B incidence per 100,000 population			
3.3.5 Number of people requiring interventions against neglected tropical diseases				

3.4 By 2030, reduce by one third premature mortality from non-communicable diseases through prevention and treatment and promote mental health and well-being	3.4.1 Mortality rate attributed to cardiovascular disease, cancer, diabetes or chronic respiratory disease	Cardiovascular disease death rate per thousand	All death rate data come from WHO's Global Health Estimates.	1
		Cancer death rate per thousand	All death rate data come from WHO's Global Health Estimates.	1
		Digestive disease death rate per thousand	All death rate data come from WHO's Global Health Estimates.	1
		Respiratory disease death rate per thousand	All death rate data come from WHO's Global Health Estimates.	1
		Diabetes death rate per thousand	All death rate data come from WHO's Global Health Estimates.	1
		Mental health death rate per thousand	All death rate data come from WHO's Global Health Estimates.	1
		Other non-communicable disease death rate per thousand	All death rate data come from WHO's Global Health Estimates.	1
	3.4.2 Suicide mortality rate			
3.5 Strengthen the prevention and treatment of substance abuse, including narcotic drug abuse and harmful use of alcohol	3.5.1 Coverage of treatment interventions (pharmacological, psychosocial and rehabilitation and aftercare services) for substance use disorders			
	3.5.2 Harmful use of alcohol, defined according to the national context as alcohol per capita consumption (aged 15 years and older) within a calendar year in litres of pure alcohol			
3.6 By 2020, halve the number of global deaths and injuries from road traffic accidents	3.6.1 Death rate due to road traffic injuries	Road traffic death rate per thousand	All death rate data come from WHO's Global Health Estimates.	1
3.7 By 2030, ensure universal access to sexual and reproductive health-care services, including for family planning, information and education, and the integration of reproductive health into national strategies and programmes	3.7.1 Proportion of women of reproductive age (aged 15-49 years) who have their need for family planning satisfied with modern methods	CONTRUSE: Contraception use as a percent of fertile women	SeriesPopContrUse%WDI: prevalence of contraceptive use. World Bank's World Development Indicators.	1
	3.7.2 Adolescent birth rate (aged 10-14 years; aged 15-19 years) per 1,000 women in that age group			

3.8 Achieve universal health coverage, including financial risk protection, access to quality essential health-care services and access to safe, effective, quality and affordable essential medicines and vaccines for all	3.8.1 Coverage of essential health services (defined as the average coverage of essential services based on tracer interventions that include reproductive, maternal, newborn and child health, infectious diseases, non-communicable diseases and service capacity and access, among the general and the most disadvantaged population)			
	3.8.2 Number of people covered by health insurance or a public health system per 1,000 population			
3.9 By 2030, substantially reduce the number of deaths and illnesses from hazardous chemicals and air, water and soil pollution and contamination	3.9.1 Mortality rate attributed to household and ambient air pollution			
	3.9.2 Mortality rate attributed to unsafe water, unsafe sanitation and lack of hygiene (exposure to unsafe Water, Sanitation and Hygiene for All (WASH) services)			
	3.9.3 Mortality rate attributed to unintentional poisoning			
3.a Strengthen the implementation of the World Health Organization Framework Convention on Tobacco Control in all countries, as appropriate	3.a.1 Age-standardized prevalence of current tobacco use among persons aged 15 years and older	HLSMOKING: Smoking rate	SeriesHealthSmokingMales%SI and SeriesHealthSmokingFemales%SI: smoking rate estimates from WHO.	1
3.b Support the research and development of vaccines and medicines for the communicable and non-communicable diseases that primarily affect developing countries, provide access to affordable essential medicines and vaccines, in accordance	3.b.1 Proportion of the population with access to affordable medicines and vaccines on a sustainable basis			

with the Doha Declaration on the TRIPS Agreement and Public Health, which affirms the right of developing countries to use to the full the provisions in the Agreement on Trade-Related Aspects of Intellectual Property Rights regarding flexibilities to protect public health, and, in particular, provide access to medicines for all	3.b.2 Total net official development assistance to medical research and basic health sectors			
3.c Substantially increase health financing and the recruitment, development, training and retention of the health workforce in developing countries, especially in least developed countries and small island developing States	3.c.1 Health worker density and distribution			
3.d Strengthen the capacity of all countries, in particular developing countries, for early warning, risk reduction and management of national and global health risks	3.d.1 International Health Regulations (IHR) capacity and health emergency preparedness			
Goal 4. Ensure inclusive and equitable quality education and promote lifelong learning opportunities for all				
4.1 By 2030, ensure that all girls and boys complete free, equitable and quality primary and secondary education leading to relevant and effective learning outcomes	4.1.1 Proportion of children and young people: (a) in grades 2/3; (b) at the end of primary; and (c) at the end of lower secondary achieving at least a minimum proficiency level in (i) reading and (ii) mathematics, by sex	EDPRIENRN: Primary education net enrollment rate	All of our education enrollment, completion, and graduation rates come from UNESCO-UIS.	1
		EDPRIENRG: Primary education gross enrollment rate	Same as above	1
		ENDPRICR: Primary education gross completion rate	Same as above	1
		EDSECLWENRG: Lower secondary education gross enrollment rate	Same as above	1
		EDSECLWRGRATE: Lower secondary education graduation rate	Same as above	1
		EDSECUPPRENRG: Upper secondary education gross enrollment rate	Same as above	1

		ENSECUPPRGRATE: Upper secondary education graduation rate	Same as above	1
4.2 By 2030, ensure that all girls and boys have access to quality early childhood development, care and pre-primary education so that they are ready for primary education	4.2.1 Proportion of children under 5 years of age who are developmentally on track in health, learning and psychosocial well-being, by sex			
	4.2.2 Participation rate in organized learning (one year before the official primary entry age), by sex			
4.3 By 2030, ensure equal access for all women and men to affordable and quality technical, vocational and tertiary education, including university	4.3.1 Participation rate of youth and adults in formal and non-formal education and training in the previous 12 months, by sex	EDSECLWRVOC: Vocation as a percent of enrollment in all programs for lower secondary education	All of our education enrollment, completion, and graduation rates come from UNESCO-UIS.	0
4.4 By 2030, substantially increase the number of youth and adults who have relevant skills, including technical and vocational skills, for employment, decent jobs and entrepreneurship	4.4.1 Proportion of youth and adults with information and communications technology (ICT) skills, by type of skill	EDSECUPPRVOC: Vocation as a percent of enrollment in all programs for upper secondary education	Same as above	0
4.5 By 2030, eliminate gender disparities in education and ensure equal access to all levels of education and vocational training for the vulnerable, including persons with disabilities, indigenous peoples and children in vulnerable situations	4.5.1 Parity indices (female/male, rural/urban, bottom/top wealth quintile and others such as disability status, indigenous peoples and conflict-affected, as data become available) for all education indicators on this list that can be disaggregated	Primary education net enrollment rate parity index (female/male)	Same as above	1
		Primary education gross enrollment rate parity index (female/male)	Same as above	1
		Primary education enrollment rate parity index (female/male)	Same as above	1
		Primary education gross completion rate parity index (female/male)	Same as above	1
		Lower secondary education gross enrollment rate parity index (female/male)	Same as above	1
		Lower secondary education graduation rate parity index (female/male)	Same as above	1
		Upper secondary education gross enrollment rate parity index (female/male)	Same as above	1

		Upper secondary education graduation rate parity index (female/male)	Same as above	1
		Years of education obtained by population 15+ parity index (female/male)	Same as above	1
4.6 By 2030, ensure that all youth and a substantial proportion of adults, both men and women, achieve literacy and numeracy	4.6.1 Percentage of population in a given age group achieving at least a fixed level of proficiency in functional (a) literacy and (b) numeracy skills, by sex			
4.7 By 2030, ensure that all learners acquire the knowledge and skills needed to promote sustainable development, including, among others, through education for sustainable development and sustainable lifestyles, human rights, gender equality, promotion of a culture of peace and non-violence, global citizenship and appreciation of cultural diversity and of culture's contribution to sustainable development	4.7.1 Extent to which (i) global citizenship education and (ii) education for sustainable development, including gender equality and human rights, are mainstreamed at all levels in: (a) national education policies, (b) curricula, (c) teacher education and (d) student assessment			
4.a Build and upgrade education facilities that are child, disability and gender sensitive and provide safe, non-violent, inclusive and effective learning environments for all	4.a.1 Proportion of schools with access to: (a) electricity; (b) the Internet for pedagogical purposes; (c) computers for pedagogical purposes; (d) adapted infrastructure and materials for students with disabilities; (e) basic drinking water; (f) single-sex basic sanitation facilities; and (g) basic handwashing facilities (as per the WASH indicator definitions)			

<p>4.b By 2020, substantially expand globally the number of scholarships available to developing countries, in particular least developed countries, small island developing States and African countries, for enrolment in higher education, including vocational training and information and communications technology, technical, engineering and scientific programmes, in developed countries and other developing countries</p>	<p>4.b.1 Volume of official development assistance flows for scholarships by sector and type of study</p>			
<p>4.c By 2030, substantially increase the supply of qualified teachers, including through international cooperation for teacher training in developing countries, especially least developed countries and small island developing States</p>	<p>4.c.1 Proportion of teachers in: (a) pre- primary; (b) primary; (c) lower secondary; and (d) upper secondary education who have received at least the minimum organized teacher training (e.g. pedagogical training) pre-service or in- service required for teaching at the relevant level in a given country</p>			
<p>Goal 5. Achieve gender equality and empower all women and girls</p>				
<p>5.1 End all forms of discrimination against all women and girls everywhere</p>	<p>5.1.1 Whether or not legal frameworks are in place to promote, enforce and monitor equality and non-discrimination on the basis of sex</p>			
<p>5.2 Eliminate all forms of violence against all women and girls in the public and private spheres, including trafficking and sexual and other types of exploitation</p>	<p>5.2.1 Proportion of ever-partnered women and girls aged 15 years and older subjected to physical, sexual or psychological violence by a current or former intimate partner in the previous 12 months, by form of violence and by age</p>			
	<p>5.2.2 Proportion of women and girls aged 15 years and older subjected to sexual violence by persons other than an intimate partner in the previous 12 months, by age and place of occurrence</p>			

5.3 Eliminate all harmful practices, such as child, early and forced marriage and female genital mutilation	5.3.1 Proportion of women aged 20-24 years who were married or in a union before age 15 and before age 18			
	5.3.2 Proportion of girls and women aged 15-49 years who have undergone female genital mutilation/cutting, by age			
5.4 Recognize and value unpaid care and domestic work through the provision of public services, infrastructure and social protection policies and the promotion of shared responsibility within the household and the family as nationally appropriate	5.4.1 Proportion of time spent on unpaid domestic and care work, by sex, age and location			
5.5 Ensure women's full and effective participation and equal opportunities for leadership at all levels of decision-making in political, economic and public life	5.5.1 Proportion of seats held by women in a) national parliaments and b) local governments			
	5.5.2 Proportion of women in managerial positions			
5.6 Ensure universal access to sexual and reproductive health and reproductive rights as agreed in accordance with the Programme of Action	5.6.1 Proportion of women aged 15-49 years who make their own informed decisions regarding sexual relations, contraceptive use and reproductive health care			
Development and the Beijing Platform for Action and the outcome documents of their review conferences	5.6.2 Number of countries with laws and regulations that guarantee women aged 15-49 years access to sexual and reproductive health care, information and education			
5.a Undertake reforms to give women equal rights to economic resources, as well as access to ownership and control over land and other forms of property, financial services, inheritance and natural resources, in accordance with national laws	5.a.1 (a) Proportion of total agricultural population with ownership or secure rights over agricultural land, by sex; and (b) share of women among owners or rights-bearers of agricultural land, by type of tenure			
	5.a.2 Proportion of countries where the legal framework (including customary law) guarantees women's equal rights to land ownership and/or control			

5.b Enhance the use of enabling technology, in particular information and communications technology, to promote the empowerment of women	5.b.1 Proportion of individuals who own a mobile telephone, by sex	ICTMOBIL: Mobile phones per 100 people	SeriesICTTelephoneSubscribersPer100: mobile cellular subscriptions per 100 inhabitants. ITU (International Telecommunications Union).	1
5.c Adopt and strengthen sound policies and enforceable legislation for the promotion of gender equality and the empowerment of all women and girls at all levels	5.c.1 Proportion of countries with systems to track and make public allocations for gender equality and women's empowerment			
Goal 6. Ensure availability and sustainable management of water and sanitation for all				
6.1 By 2030, achieve universal and equitable access to safe and affordable drinking water for all	6.1.1 Proportion of population using safely managed drinking water services	WATSAFE: Percent of people with access to safe water	SeriesWSSJMPWaterTotal%OtherImproved and SeriesWSSJMPWaterTotal%Piped: Proportion of total population served with either piped or other improved water sources. WSS JMP WHO/UNICEF	1
6.2 By 2030, achieve access to adequate and equitable sanitation and hygiene for all and end open defecation, paying special attention to the needs of women and girls and those in vulnerable situations	6.2.1 Proportion of population using safely managed sanitation services, including a hand-washing facility with soap and water	SANITATION: Percent of people with access to improved sanitation services	SeriesWSSJMPSanitationTotal%Improved: Proportion of total population served with improved sanitation. WSS JMP WHO/UNICEF	1
6.3 By 2030, improve water quality by reducing pollution, eliminating dumping and minimizing release of hazardous chemicals and materials, halving the proportion of untreated wastewater and substantially increasing recycling and safe reuse globally	6.3.1 Proportion of wastewater safely treated	WATWASTE: Percent of people connected to wastewater collection system	SeriesWasteWaterColConnect%: Percent of population connected to urban wastewater collection system. UNSD/UNEP/OECD/EUROSTAT	1
		WATWASTETREAT: Percent of people connected to wastewater treatment system	SeriesWasteWaterTreatConnect%: Percent of population connected to urban wastewater treatment system. UNSD/UNEP/OECD/EUROSTAT	1
	6.3.2 Proportion of bodies of water with good ambient water quality			
6.4 By 2030, substantially increase water-use efficiency across all sectors and ensure sustainable withdrawals and supply of freshwater to address water scarcity and substantially reduce the number of people suffering from water scarcity	6.4.1 Change in water-use efficiency over time			
	6.4.2 Level of water stress: freshwater withdrawal as a proportion of available freshwater resources	Level of water stress: freshwater withdrawal as a percent of available freshwater resources	Total water demand over total water supply. SeriesWatWithDMunicipal, SeriesWatWithDIndustrial, SeriesWatWithDAgriculture. All data from FAO AQUASTAT.	1

6.5 By 2030, implement integrated water resources management at all levels, including through transboundary cooperation as appropriate	6.5.1 Degree of integrated water resources management implementation (0-100)			
	6.5.2 Proportion of transboundary basin area with an operational arrangement for water cooperation			
6.6 By 2020, protect and restore water-related ecosystems, including mountains, forests, wetlands, rivers, aquifers and lakes	6.6.1 Change in the extent of water-related ecosystems over time			
6.a By 2030, expand international cooperation and capacity-building support to developing countries in water- and sanitation-related activities and programmes, including water harvesting, desalination, water efficiency, wastewater treatment, recycling and reuse technologies	6.a.1 Amount of water- and sanitation-related official development assistance that is part of a government-coordinated spending plan			
6.b Support and strengthen the participation of local communities in improving water and sanitation management	6.b.1 Proportion of local administrative units with established and operational policies and procedures for participation of local communities in water and sanitation management			
Goal 7. Ensure access to affordable, reliable, sustainable and modern energy for all				
7.1 By 2030, ensure universal access to affordable, reliable and modern energy services	7.1.1 Proportion of population with access to electricity	INFRAELECACC: Percent of population with access to electricity	SeriesEnElecAccess%National: Percentage of national population with access to electricity. World Bank's World Development Indicators.	1
	7.1.2 Proportion of population with primary reliance on clean fuels and technology			
7.2 By 2030, increase substantially the share of renewable energy in the global energy mix	7.2.1 Renewable energy share in the total final energy consumption	Renewable as a percent of total energy production	All energy production data comes from International Energy Agency's (IEA) World Energy Outlook	0
7.3 By 2030, double the global rate of improvement in energy efficiency	7.3.1 Energy intensity measured in terms of primary energy and GDP	ENDEM/GDP: Energy intensity measured in terms of primary energy and GDP	All energy demand data comes from International Energy Agency's (IEA) World Energy Outlook. GDP data comes from IMF.	0

7.a By 2030, enhance international cooperation to facilitate access to clean energy research and technology, including renewable energy, energy efficiency and advanced and cleaner fossil-fuel technology, and promote investment in energy infrastructure and clean energy technology	7.a.1 Mobilized amount of United States dollars per year starting in 2020 accountable towards the \$100 billion commitment			
7.b By 2030, expand infrastructure and upgrade technology for supplying modern and sustainable energy services for all in developing countries, in particular least developed countries, small island developing States and landlocked developing countries, in accordance with their respective programmes of support	7.b.1 Investments in energy efficiency as a percentage of GDP and the amount of foreign direct investment in financial transfer for infrastructure and technology to sustainable development services			
Goal 8. Promote sustained, inclusive and sustainable economic growth, full and productive employment and decent work for all				
8.1 Sustain per capita economic growth in accordance with national circumstances and, in particular, at least 7 per cent gross domestic product growth per annum in the least developed countries	8.1.1 Annual growth rate of real GDP per capita	GDPPC: Annual growth rate of real GDP per capita	SeriesGDP2011PCPPP: GDP per capita (constant 2011 PPP international \$)	1
8.2 Achieve higher levels of economic productivity through diversification, technological upgrading and innovation, including through a focus on high- value added and labour-intensive sectors	8.2.1 Annual growth rate of real GDP per employed person	Annual growth rate of real GDP per employed person	SeriesGDP2011PCPPP: GDP per capita (constant 2011 PPP international \$)	1

8.3 Promote development-oriented policies that support productive activities, decent job creation, entrepreneurship, creativity and innovation, and encourage the formalization and growth of micro-, small- and medium-sized enterprises, including through access to financial services	8.3.1 Proportion of informal employment in non-agriculture employment, by sex	LABINFORMSHR: percent of informal employment (non-agricultural)	SeriesLaborInformal%TotalAllBlended: Informal labor as a percent of total, from ILO-WIEGO and World Bank.	1
8.4 Improve progressively, through 2030, global resource efficiency in consumption and production and endeavour to decouple economic growth from environmental degradation, in accordance with the 10-Year Framework of Programmes on Sustainable Consumption and Production, with developed countries taking the lead	8.4.1 Material footprint, material footprint per capita, and material footprint per GDP			
	8.4.2 Domestic material consumption, domestic material consumption per capita, and domestic material consumption per GDP			
8.5 By 2030, achieve full and productive employment and decent work for all women and men, including for young people and persons with disabilities, and equal pay for work of equal value	8.5.1 Average hourly earnings of female and male employees, by occupation, age and persons with disabilities			
	8.5.2 Unemployment rate, by sex, age and persons with disabilities			
8.6 By 2020, substantially reduce the proportion of youth not in employment, education or training	8.6.1 Proportion of youth (aged 15-24 years) not in education, employment or training			
8.7 Take immediate and effective measures to eradicate forced labour, end modern slavery and human trafficking and secure the prohibition and elimination of the worst forms of child labour, including recruitment and use of child soldiers, and by 2025 end child labour in all its forms	8.7.1 Proportion and number of children aged 5-17 years engaged in child labour, by sex and age			

8.8 Protect labour rights and promote safe and secure working environments for all workers, including migrant workers, in particular women migrants, and those in precarious employment	8.8.1 Frequency rates of fatal and non-fatal occupational injuries, by sex and migrant status			
	8.8.2 Increase in national compliance of labour rights (freedom of association and collective bargaining) based on International Labour Organization (ILO) textual sources and national legislation, by sex and migrant status			
8.9 By 2030, devise and implement policies to promote sustainable tourism that creates jobs and promotes local culture and products	8.9.1 Tourism direct GDP as a proportion of total GDP and in growth rate			
	8.9.2 Number of jobs in tourism industries as a proportion of total jobs and growth rate of jobs, by sex			
8.10 Strengthen the capacity of domestic financial	8.10.1 Number of commercial bank branches and automated teller machines (ATMs) per 100,000 adults			
to and access banking, insurance and financial services for all	8.10.2 Proportion of adults (15 years and older) with an account at a bank or other financial institution or with a mobile- money-service provider			
8.a Increase Aid for Trade support for developing countries, in particular least developed countries, including through the Enhanced Integrated Framework for Trade-related Technical Assistance to Least Developed Countries	8.a.1 Aid for Trade commitments and disbursements			
8.b By 2020, develop and operationalize a global strategy for youth employment and implement the Global Jobs Pact of the International Labour Organization	8.b.1 Total government spending in social protection and employment programmes as a proportion of the national budgets and GDP			
Goal 9. Build resilient infrastructure, promote inclusive and sustainable industrialization and foster innovation				

9.1 Develop quality, reliable, sustainable and resilient infrastructure, including regional and trans-border infrastructure, to support economic development and human well-being, with a focus on affordable and equitable access for all	9.1.1 Proportion of the rural population who live within 2 km of an all-season road	INFRAROADRAI: Percent of rural people living within 2 km of an all weather road	SeriesRoaRuralAccessIndex: Rural Access Index, proportion of the rural population who lie within 2 km (25 minute walk) of an all-weather road. The World Bank Rural Access Index.	0
	9.1.2 Passenger and freight volumes, by mode of transport			
9.2 Promote inclusive and sustainable industrialization and, by 2030, significantly raise industry's share of employment and gross domestic product, in line with national circumstances, and double its share in least developed countries	9.2.1 Manufacturing value added as a proportion of GDP and per capita	Manufacturing value added as a percent of GDP	SeriesVaddMan%: Value added in manufacturing as a percent of GDP. World Bank's World Development Indicators.	0
		Manufacturing value added per capita	Same as above.	0
	9.2.2 Manufacturing employment as a proportion of total employment	Manufacturing employment as a percentage of total employment		0
9.3 Increase the access of small-scale industrial and other enterprises, in particular in developing countries, to financial services, including affordable credit, and their integration into value chains and markets	9.3.1 Proportion of small-scale industries in total industry value added			
	9.3.2 Proportion of small-scale industries with a loan or line of credit			
9.4 By 2030, upgrade infrastructure and retrofit industries to make them sustainable, with increased resource-use efficiency and greater adoption of clean and environmentally sound technologies and industrial processes, with all countries taking action in accordance with their respective capabilities	9.4.1 CO2 emission per unit of value added	CO2 emissions per unit of value added (driven by energy production, not consumption)	SeriesEmissionsCarbonCDIAC: Total carbon emissions from fossil fuel consumption and cement production. Carbon Dioxide Information Analysis Center.	0
9.5 Enhance scientific research, upgrade the technological capabilities of industrial sectors in all countries, in particular developing countries, including, by 2030, encouraging innovation and substantially increasing the number of research and development workers per 1 million people and public and private research and development spending	9.5.1 Research and development expenditure as a proportion of GDP	RANDEXP: Research and Development spending as a percent of GDP.	SeriesR&Dgovt%GDP: Gross R&D expenditure by government. UNESCO	0
	9.5.2 Researchers (in full-time equivalent) per million inhabitants			

9.a Facilitate sustainable and resilient infrastructure development in developing countries through enhanced financial, technological and technical support to African countries, least developed countries, landlocked developing countries and small island developing States	9.a.1 Total official international support (official development assistance plus other official flows) to infrastructure			
9.b Support domestic technology development, research and innovation in developing countries, including by ensuring a conducive policy environment for, inter alia, industrial diversification and value addition to commodities	9.b.1 Proportion of medium and high- tech industry value added in total value added			
9.c Significantly increase access to information and communications technology and strive to provide universal and affordable access to the Internet in least developed countries by 2020	9.c.1 Proportion of population covered by a mobile network, by technology	ICTBROAD: percentage of population with access to broadband technology	SeriesICTBroadbandSubscribersPer100ITU: Fixed broadband subscriptions per 100 inhabitants. ITU.	0
		ICTBROADMOBIL: Percentage of population with access to mobile broadband technology	SeriesICTBroadbandMobileSubsPer100: Broadband obile, mobile cellular subscriptions with access to data communication at broadband speed per 100 inhabitants.	0
Goal 10. Reduce inequality within and among countries				
10.1 By 2030, progressively achieve and sustain income growth of the bottom 40 per cent of the population at a rate higher than the national average	10.1.1 Growth rates of household expenditure or income per capita among the bottom 40 per cent of the population and the total population			
10.2 By 2030, empower and promote the social, economic and political inclusion of all, irrespective of age, sex, disability, race, ethnicity, origin, religion or economic or other status	10.2.1 Proportion of people living below 50 per cent of median income, by age, sex and persons with disabilities			

10.3 Ensure equal opportunity and reduce inequalities of outcome, including by eliminating discriminatory laws, policies and practices and promoting appropriate legislation, policies and action in this regard	10.3.1 Proportion of the population reporting having personally felt discriminated against or harassed within the previous 12 months on the basis of a ground of discrimination prohibited under international human rights law			
10.4 Adopt policies, especially fiscal, wage and social protection policies, and progressively achieve greater equality	10.4.1 Labour share of GDP, comprising wages and social protection transfers	Labour share of GDP, comprising wages and social protection transfers		0
10.5 Improve the regulation and monitoring of global financial markets and institutions and strengthen the implementation of such regulations	10.5.1 Financial Soundness Indicators			
10.6 Ensure enhanced representation and voice for developing countries in decision-making in global international economic and financial institutions in order to deliver more effective, credible, accountable and legitimate institutions	10.6.1 Proportion of members and voting rights of developing countries in international organizations			
10.7 Facilitate orderly, safe, regular and responsible migration and mobility of people, including through the implementation of planned and well-managed migration policies	10.7.1 Recruitment cost borne by employee as a proportion of yearly income earned in country of destination			
	10.7.2 Number of countries that have implemented well-managed migration policies			
10.a Implement the principle of special and differential treatment for developing countries, in particular least developed countries, in accordance with World Trade Organization agreements	10.a.1 Proportion of tariff lines applied to imports from least developed countries and developing countries with zero-tariff			

10.b Encourage official development assistance and financial flows, including foreign direct investment, to States where the need is greatest, in particular least developed countries, African countries, small island developing States and landlocked developing countries, in accordance with their national plans and programmes	10.b.1 Total resource flows for development, by recipient and donor countries and type of flow (e.g. official development assistance, foreign direct investment and other flows)	Net foreign aid	SeriesAidRec%GNI and SeriesAidDon%GNI: Official development assistance and official aid, net, % of GNI; Aid donations as percent of GNI. World Bank's World Development Indicators and OECD UN Statistics Division.	0
		Foreign direct investment annual inflows in Billion \$	SeriesXFDIInflows%GDP: Foreign direct investment net inflow as % of GDP. World Bank's World Development Indicators.	0
		Total resource flows in development in Billion \$	Sum of above 2 indicators i.e. aid plus FDI.	0
10.c By 2030, reduce to less than 3 per cent the transaction costs of migrant remittances and eliminate remittance corridors with costs higher than 5 per cent	10.c.1 Remittance costs as a proportion of the amount remitted			
Goal 11. Make cities and human settlements inclusive, safe, resilient and sustainable				
11.1 By 2030, ensure access for all to adequate, safe and affordable housing and basic services and upgrade slums	11.1.1 Proportion of urban population living in slums, informal settlements or inadequate housing			
11.2 By 2030, provide access to safe, affordable, accessible and sustainable transport systems for all, improving road safety, notably by expanding public transport, with special attention to the needs of those in vulnerable situations, women, children, persons with disabilities and older persons	11.2.1 Proportion of population that has convenient access to public transport, by sex, age and persons with disabilities			

11.3 By 2030, enhance inclusive and sustainable urbanization and capacity for participatory, integrated and sustainable human settlement planning and management in all countries	11.3.1 Ratio of land consumption rate to population growth rate	Ratio of crop land to population growth rate	SeriesLandCrop: Crop land. FAO.	0
		Ratio of grazing land to population growth rate	SeriesLandGrazing: grazing land. FAO.	0
	11.3.2 Proportion of cities with a direct participation structure of civil society in urban planning and management that operate regularly and democratically			
11.4 Strengthen efforts to protect and safeguard the world's cultural and natural heritage	11.4.1 Total expenditure (public and private) per capita spent on the preservation, protection and conservation of all cultural and natural heritage, by type of heritage (cultural, natural, mixed and World Heritage Centre designation), level of government (national, regional and local/municipal), type of expenditure (operating expenditure/investment) and type of private funding (donations in kind, private non-profit sector and sponsorship)			
11.5 By 2030, significantly reduce the number of deaths and the number of people affected and substantially decrease the direct economic losses relative to global gross domestic product caused by disasters, including water-related disasters, with a focus on protecting the poor and people in vulnerable situations	11.5.1 Number of deaths, missing persons and persons affected by disaster per 100,000 people			
	11.5.2 Direct disaster economic loss in relation to global GDP, including disaster damage to critical infrastructure and disruption of basic services			
11.6 By 2030, reduce the adverse per capita environmental impact of cities, including by paying special attention to air quality and municipal and other waste management	11.6.1 Proportion of urban solid waste regularly collected and with adequate final discharge out of total urban solid waste generated, by cities			
	11.6.2 Annual mean levels of fine particulate matter (e.g. PM2.5 and PM10) in cities (population weighted)	ENVPM2pt5: Urban-population weighted PM2.5 levels in residential areas of cities with more than 100k residents.	SeriesEnvPM10	0

11.7 By 2030, provide universal access to safe, inclusive and accessible, green and public spaces, in particular for women and children, older persons and persons with disabilities	11.7.1 Average share of the built-up area of cities that is open space for public use for all, by sex, age and persons with disabilities			
	11.7.2 Proportion of persons victim of physical or sexual harassment, by sex, age, disability status and place of occurrence, in the previous 12 months			
11.a Support positive economic, social and environmental links between urban, peri-urban and rural areas by strengthening national and regional development planning	11.a.1 Proportion of population living in cities that implement urban and regional development plans integrating population projections and resource needs, by size of city			
11.b By 2020, substantially increase the number of cities and human settlements adopting and implementing integrated policies and plans towards inclusion, resource efficiency, mitigation and adaptation to climate change, resilience to disasters, and develop and implement, in line with the Sendai Framework for Disaster Risk Reduction 2015-2030, holistic disaster risk management at all levels	11.b.1 Proportion of local governments that adopt and implement local disaster risk reduction strategies in line with the Sendai Framework for Disaster Risk Reduction 2015-2030a			
	11.b.2 Number of countries with national and local disaster risk reduction strategiesa			
11.c Support least developed countries, including through financial and technical assistance, in building sustainable and resilient buildings utilizing local materials	11.c.1 Proportion of financial support to the least developed countries that is allocated to the construction and retrofitting of sustainable, resilient and resource-efficient buildings utilizing local materials			
Goal 12. Ensure sustainable consumption and production patterns				
12.1 Implement the 10-Year Framework of Programmes on Sustainable Consumption and Production Patterns, all countries taking action, with developed countries taking the lead, taking into account the development and capabilities of developing countries	12.1.1 Number of countries with sustainable consumption and production (SCP) national action plans or SCP mainstreamed as a priority or a target into national policies			

12.2 By 2030, achieve the sustainable management and efficient use of natural resources	12.2.1 Material footprint, material footprint per capita, and material footprint per GDP			
	12.2.2 Domestic material consumption, domestic material consumption per capita, and domestic material consumption per GDP			
12.3 By 2030, halve per capita global food waste at the retail and consumer levels and reduce food losses along production and supply chains, including post-harvest losses	12.3.1 Global food loss index	Average of production, transformation, and consumption losses.		0
12.4 By 2020, achieve the environmentally sound management of chemicals and all wastes throughout their life cycle, in accordance with agreed international frameworks, and significantly reduce their release to air, water and soil in order to minimize their adverse impacts on human health and the environment	12.4.1 Number of parties to international multilateral environmental agreements on hazardous waste, and other chemicals that meet their commitments and obligations in transmitting information as required by each relevant agreement			
	12.4.2 Hazardous waste generated per capita and proportion of hazardous waste treated, by type of treatment			
12.5 By 2030, substantially reduce waste generation through prevention, reduction, recycling and reuse	12.5.1 National recycling rate, tons of material recycled			
12.6 Encourage companies, especially large and transnational companies, to adopt sustainable practices and to integrate sustainability information into their reporting cycle	12.6.1 Number of companies publishing sustainability reports			
12.7 Promote public procurement practices that are sustainable, in accordance with national policies and priorities	12.7.1 Number of countries implementing sustainable public procurement policies and action plans			

12.8 By 2030, ensure that people everywhere have the relevant information and awareness for sustainable development and lifestyles in harmony with nature	12.8.1 Extent to which (i) global citizenship education and (ii) education for sustainable development (including climate change education) are mainstreamed in (a) national education policies; (b) curricula; (c) teacher education; and (d) student assessment			
12.a Support developing countries to strengthen their scientific and technological capacity to move towards more sustainable patterns of consumption and production	12.a.1 Amount of support to developing countries on research and development for sustainable consumption and production and environmentally sound technologies			
12.b Develop and implement tools to monitor sustainable development impacts for sustainable tourism that creates jobs and promotes local culture and products	12.b.1 Number of sustainable tourism strategies or policies and implemented action plans with agreed monitoring and evaluation tools			
12.c Rationalize inefficient fossil-fuel subsidies that encourage wasteful consumption by removing market distortions, in accordance with national circumstances, including by restructuring taxation and phasing out those harmful subsidies, where they exist, to reflect their environmental impacts, taking fully into account the specific needs and conditions of developing countries and minimizing the possible adverse impacts on their development in a manner that protects the poor and the affected communities	12.c.1 Amount of fossil-fuel subsidies per unit of GDP (production and consumption) and as a proportion of total national expenditure on fossil fuels			
Goal 13. Take urgent action to combat climate change and its impacts[b]				
13.1 Strengthen resilience and adaptive capacity to climate-related hazards and natural disasters in all countries	13.1.1 Number of countries with national and local disaster risk reduction strategiesa			
	13.1.2 Number of deaths, missing persons and persons affected by disaster per 100,000 peoplea			

<p>13.2 Integrate climate change measures into national policies, strategies and planning</p>	<p>13.2.1 Number of countries that have communicated the establishment or operationalization of an integrated policy/strategy/plan which increases their ability to adapt to the adverse impacts of climate change, and foster climate resilience and low greenhouse gas emissions development in a manner that does not threaten food production (including a national adaptation plan, nationally determined contribution, national communication, biennial update report or other)</p>			
<p>13.3 Improve education, awareness-raising and human and institutional capacity on climate change mitigation, adaptation, impact reduction and early warning</p>	<p>13.3.1 Number of countries that have integrated mitigation, adaptation, impact reduction and early warning into primary, secondary and tertiary curricula</p>			
	<p>13.3.2 Number of countries that have communicated the strengthening of institutional, systemic and individual capacity-building to implement adaptation, mitigation and technology transfer, and development actions</p>			
<p>13.a Implement the commitment undertaken by developed-country parties to the United Nations Framework Convention on Climate Change to a goal of mobilizing jointly \$100 billion annually by 2020 from all sources to address the needs of developing countries in the context of meaningful mitigation actions and transparency on implementation and fully operationalize the Green Climate Fund through its capitalization as soon as possible</p>	<p>13.a.1 Mobilized amount of United States dollars per year starting in 2020 accountable towards the \$100 billion commitment</p>			

<p>13.b Promote mechanisms for raising capacity for effective climate change-related planning and management in least developed countries and small island developing States, including focusing on women, youth and local and marginalized communities</p>	<p>13.b.1 Number of least developed countries and small island developing States that are receiving specialized support, and amount of support, including finance, technology and capacity-building, for mechanisms for raising capacities for effective climate change-related planning and management, including focusing on women, youth and local and marginalized communities</p>			
<p>Goal 14. Conserve and sustainably use the oceans, seas and marine resources for sustainable development</p>				
<p>14.1 By 2025, prevent and significantly reduce marine pollution of all kinds, in particular from land based activities, including marine debris and nutrient pollution</p>	<p>14.1.1 Index of coastal eutrophication and floating plastic debris density</p>			
<p>14.2 By 2020, sustainably manage and protect marine and coastal ecosystems to avoid significant adverse impacts, including by strengthening their resilience, and take action for their restoration in order to achieve healthy and productive oceans</p>	<p>14.2.1 Proportion of national exclusive economic zones managed using ecosystem based approaches</p>			
<p>14.3 Minimize and address the impacts of ocean acidification, including through enhanced scientific cooperation at all levels</p>	<p>14.3.1 Average marine acidity (pH) measured at agreed suite of representative sampling stations</p>			
<p>14.4 By 2020, effectively regulate harvesting and end overfishing, illegal, unreported and unregulated fishing and destructive fishing practices and implement science-based management plans, in order to restore fish stocks in the shortest time feasible, at least to levels that can produce maximum sustainable yield as determined by their biological characteristics</p>	<p>14.4.1 Proportion of fish stocks within biologically sustainable levels</p>			

<p>14.5 By 2020, conserve at least 10 per cent of coastal and marine areas, consistent with national and international law and based on the best available scientific information</p>	<p>14.5.1 Coverage of protected areas in relation to marine areas</p>			
<p>14.6 By 2020, prohibit certain forms of fisheries subsidies which contribute to overcapacity and overfishing, eliminate subsidies that contribute to illegal, unreported and unregulated fishing and refrain from introducing new such subsidies, recognizing that appropriate and effective special and differential treatment for developing and least developed countries should be an integral part of the World Trade Organization fisheries subsidies negotiation[c]</p>	<p>14.6.1 Progress by countries in the degree of implementation of international instruments aiming to combat illegal, unreported and unregulated fishing</p>			
<p>14.7 By 2030, increase the economic benefits to small island developing States and least developed countries from the sustainable use of marine resources, including through sustainable management of fisheries, aquaculture and tourism</p>	<p>14.7.1 Sustainable fisheries as a percentage of GDP in small island developing States, least developed countries and all countries</p>			
<p>14.a Increase scientific knowledge, develop research capacity and transfer marine technology, taking into account the Intergovernmental Oceanographic Commission Criteria and Guidelines on the Transfer of Marine Technology, in order to improve ocean health and to enhance the contribution of marine biodiversity to the development of developing countries, in particular small island developing States and least developed countries</p>	<p>14.a.1 Proportion of total research budget allocated to research in the field of marine technology</p>			

14.b Provide access for small-scale artisanal fishers to marine resources and markets	14.b.1 Progress by countries in the degree of application of a legal/regulatory/policy/institutional framework which recognizes and protects access rights for small-scale fisheries			
14.c Enhance the conservation and sustainable use of oceans and their resources by implementing international law as reflected in the United Nations Convention on the Law of the Sea, which provides the legal framework for the conservation and sustainable use of oceans and their resources, as recalled in paragraph 158 of "The future we want"	14.c.1 Number of countries making progress in ratifying, accepting and implementing through legal, policy and institutional frameworks, ocean-related instruments that implement international law, as reflected in the United Nation Convention on the Law of the Sea, for the conservation and sustainable use of the oceans and their resources			
Goal 15. Protect, restore and promote sustainable use of terrestrial ecosystems, sustainably manage forests, combat desertification, and halt and reverse land degradation and halt biodiversity loss				
15.1 By 2020, ensure the conservation, restoration and sustainable use of terrestrial and inland freshwater ecosystems and their services, in particular forests, wetlands, mountains and drylands, in line with obligations under international agreements	15.1.1 Forest area as a proportion of total land area	Forest area as a percentage of total land area.	SeriesLandForest: Forest land. FAO.	0
	15.1.2 Proportion of important sites for terrestrial and freshwater biodiversity that are covered by protected areas, by ecosystem type			
15.2 By 2020, promote the implementation of sustainable management of all types of forests, halt deforestation, restore degraded forests and substantially increase afforestation and reforestation globally	15.2.1 Progress towards sustainable forest management			
15.3 By 2030, combat desertification, restore degraded land and soil, including land affected by desertification, drought and floods, and strive to achieve a land degradation-neutral world	15.3.1 Proportion of land that is degraded over total land area			

15.4 By 2030, ensure the conservation of mountain ecosystems, including their biodiversity, in order to enhance their capacity to provide benefits that are essential for sustainable development	15.4.1 Coverage by protected areas of important sites for mountain biodiversity			
	15.4.2 Mountain Green Cover Index			
15.5 Take urgent and significant action to reduce the degradation of natural habitats, halt the loss of biodiversity and, by 2020, protect and prevent the extinction of threatened species	15.5.1 Red List Index			
15.6 Promote fair and equitable sharing of the benefits arising from the utilization of genetic resources and promote appropriate access to such resources, as internationally agreed	15.6.1 Number of countries that have adopted legislative, administrative and policy frameworks to ensure fair and equitable sharing of benefits			
15.7 Take urgent action to end poaching and trafficking of protected species of flora and fauna and address both demand and supply of illegal wildlife products	15.7.1 Proportion of traded wildlife that was poached or illicitly trafficked			
15.8 By 2020, introduce measures to prevent the introduction and significantly reduce the impact of invasive alien species on land and water ecosystems and control or eradicate the priority species	15.8.1 Proportion of countries adopting relevant national legislation and adequately resourcing the prevention or control of invasive alien species			
15.9 By 2020, integrate ecosystem and biodiversity values into national and local planning, development processes, poverty reduction strategies and accounts	15.9.1 Progress towards national targets established in accordance with Aichi Biodiversity Target 2 of the Strategic Plan for Biodiversity 2011-2020			
15.a Mobilize and significantly increase financial resources from all sources to conserve and sustainably use biodiversity and ecosystems	15.a.1 Official development assistance and public expenditure on conservation and sustainable use of biodiversity and ecosystems			

15.b Mobilize significant resources from all sources and at all levels to finance sustainable forest management and provide adequate incentives to developing countries to advance such management, including for conservation and reforestation	15.b.1 Official development assistance and public expenditure on conservation and sustainable use of biodiversity and ecosystems			
15.c Enhance global support for efforts to combat poaching and trafficking of protected species, including by increasing the capacity of local communities to pursue sustainable livelihood opportunities	15.c.1 Proportion of traded wildlife that was poached or illicitly trafficked			
Goal 16. Promote peaceful and inclusive societies for sustainable development, provide access to justice for all and build effective, accountable and inclusive institutions at all levels				
16.1 Significantly reduce all forms of violence and related death rates everywhere	16.1.1 Number of victims of intentional homicide per 100,000 population, by sex and age	Deaths from intentional injuries per thousand.	All death rate data come from WHO's Global Health Estimates.	0
		Years of life lost to intentional injuries per person	All YLL rate data come from WHO's Global Health Estimates.	0
		Years living with disability due to intentional injuries per person.	All YLD data come from WHO's Global Health Estimates.	0
	16.1.2 Conflict-related deaths per 100,000 population, by sex, age and cause			
	16.1.3 Proportion of population subjected to physical, psychological or sexual violence in the previous 12 months			
	16.1.4 Proportion of population that feel safe walking alone around the area they live			

16.2 End abuse, exploitation, trafficking and all forms of violence against and torture of children	16.2.1 Proportion of children aged 1-17 years who experienced any physical punishment and/or psychological aggression by caregivers in the past month			
	16.2.2 Number of victims of human trafficking per 100,000 population, by sex, age and form of exploitation			
	16.2.3 Proportion of young women and men aged 18-29 years who experienced sexual violence by age 18	Same as above		
16.3 Promote the rule of law at the national and international levels and ensure equal access to justice for all	16.3.1 Proportion of victims of violence in the previous 12 months who reported their victimization to competent authorities or other officially recognized conflict resolution mechanisms			
	16.3.2 Unsentenced detainees as a proportion of overall prison population			
16.4 By 2030, significantly reduce illicit financial and arms flows, strengthen the recovery and return of stolen assets and combat all forms of organized crime	16.4.1 Total value of inward and outward illicit financial flows (in current United States dollars)			
	16.4.2 Proportion of seized small arms and light weapons that are recorded and traced, in accordance with international standards and legal instruments			
16.5 Substantially reduce corruption and bribery in all their forms	16.5.1 Proportion of persons who had at least one contact with a public official and who paid a bribe to a public official, or were asked for a bribe by those public officials, during the previous 12 months			
	16.5.2 Proportion of businesses that had at least one contact with a public official and that paid a bribe to a public official, or were asked for a bribe by those public officials during the previous 12 months			
16.6 Develop effective, accountable and transparent	16.6.1 Primary government expenditures as a proportion of original approved budget, by sector (or by budget codes or similar)			

	16.6.2 Proportion of the population satisfied with their last experience of public services			
16.7 Ensure responsive, inclusive, participatory and representative decision-making at all levels	16.7.1 Proportions of positions (by sex, age, persons with disabilities and population groups) in public institutions (national and local legislatures, public service, and judiciary) compared to national distributions			
	16.7.2 Proportion of population who believe decision-making is inclusive and responsive, by sex, age, disability and population group			
16.8 Broaden and strengthen the participation of developing countries in the institutions of global governance	16.8.1 Proportion of members and voting rights of developing countries in international organizations			
16.9 By 2030, provide legal identity for all, including birth registration	16.9.1 Proportion of children under 5 years of age whose births have been registered with a civil authority, by age			
16.10 Ensure public access to information and protect fundamental freedoms, in accordance with national legislation and international agreements	16.10.1 Number of verified cases of killing, kidnapping, enforced disappearance, arbitrary detention and torture of journalists, associated media personnel, trade unionists and human rights advocates in the previous 12 months			
	16.10.2 Number of countries that adopt and implement constitutional, statutory and/or policy guarantees for public access to information			
16.a Strengthen relevant national institutions, including through international cooperation, for building capacity at all levels, in particular in developing countries, to prevent violence and combat terrorism and crime	16.a.1 Existence of independent national human rights institutions in compliance with the Paris Principles			

16.b Promote and enforce non-discriminatory laws and policies for sustainable development	16.b.1 Proportion of population reporting having personally felt discriminated against or harassed in the previous 12 months on the basis of a ground of discrimination prohibited under international human rights law			
Goal 17. Strengthen the means of implementation and revitalize the Global Partnership for Sustainable Development				
Finance				
17.1 Strengthen domestic resource mobilization, including through international support to developing countries, to improve domestic capacity for tax and other revenue collection	17.1.1 Total government revenue as a proportion of GDP, by source	GOVREV/GDP: Total government revenue as a percent of GDP	SeriesGovtCalcRevTot%GDP: Total government revenue as a percent of GDP. IMF Government Finance Statistics.	0
		HHTAX: Household taxes as a percent of GDP	Initialized as residual from firm, welfare, and indirect taxes.	0
		FIRMTAX: Firm taxes as a percent of GDP.	SeriesTaxCorp%Tot: Corporate taxes as percent of total central government revenue. IMF Government Finance Statistics.	0
		INDIRECTTAX: Indirect taxes (taxes on goods and services) as a percent of GDP	SeriesTaxGoodSer%CurRev: Taxes on goods and services as % of total got revenue. World Bank's World Development Indicators.	0
		SSWELTAX: Social security and welfare taxes as a percent of GDP.	SeriesTaxSocSec%CurRev: Social security taxes as % of total govt revenue.	0
	17.1.2 Proportion of domestic budget funded by domestic taxes	Proportion of domestic budget funded by domestic taxes		
17.2 Developed countries to implement fully their official development assistance commitments, including the commitment by many developed countries to achieve the target of 0.7 per cent of gross national income for official development assistance (ODA/GNI) to developing countries and 0.15 to 0.20 per cent of ODA/GNI to least developed countries; ODA providers are encouraged to consider setting a target to provide at least 0.20 per cent of ODA/GNI to least developed countries	17.2.1 Net official development assistance, total and to least developed countries, as a proportion of the Organization for Economic Cooperation and Development Assistance Committee donors' gross national income (GNI)	Net official development assistance as percent of GDP.	SeriesAidRec%GNI and SeriesAidDon%GNI: Official development assistance and official aid, net, % of GNI. World Banks's World Development Indicators.	1

17.3 Mobilize additional financial resources for developing countries from multiple sources	17.3.1 Foreign direct investments (FDI), official development assistance and South- South Cooperation as a proportion of total domestic budget			
	17.3.2 Volume of remittances (in United States dollars) as a proportion of total GDP	Volume of remittances as % of GDP	SeriesXWorkerRemitPaid: Worker remittances by country where paid. World Bank's World Development Indicators.	0
17.4 Assist developing countries in attaining long-term debt sustainability through coordinated policies aimed at fostering debt financing, debt relief and debt restructuring, as appropriate, and address the external debt of highly indebted poor countries to reduce debt distress	17.4.1 Debt service as a proportion of exports of goods and services			
17.5 Adopt and implement investment promotion regimes for least developed countries	17.5.1 Number of countries that adopt and implement investment promotion regimes for least developed countries			
Technology				
17.6 Enhance North-South, South-South and triangular regional and international cooperation on and access to science, technology and innovation and enhance knowledge-sharing on mutually agreed terms, including through improved coordination among existing mechanisms, in particular at the United Nations level, and through a global technology facilitation mechanism	17.6.1 Number of science and/or technology cooperation agreements and programmes between countries, by type of cooperation			
	17.6.2 Fixed Internet broadband subscriptions per 100 inhabitants, by speed	ICTBROAD: Fixed internet broadband subscriptions per 100 inhabitants	SeriesICTBroadbandSubscribersPer100ITU: Fixed broadband subscriptions per 100 inhabitants. From ITU.	0
17.7 Promote the development, transfer, dissemination and diffusion of environmentally sound technologies to developing countries on favourable terms, including on concessional and preferential terms, as mutually agreed	17.7.1 Total amount of approved funding for developing countries to promote the development, transfer, dissemination and diffusion of environmentally sound technologies			

<p>17.8 Fully operationalize the technology bank and science, technology and innovation capacity- building mechanism for least developed countries by 2017 and enhance the use of enabling technology, in particular information and communications technology</p>	<p>17.8.1 Proportion of individuals using the Internet</p>	<p>INFRANET: ICT infrastructure index</p>	<p>IFs index initialized using access rates for various types of ICT.</p>	<p>0</p>
Capacity-building				
<p>17.9 Enhance international support for implementing effective and targeted capacity- building in developing countries to support national plans to implement all the Sustainable Development Goals, including through North-South, South-South and triangular cooperation</p>	<p>17.9.1 Dollar value of financial and technical assistance (including through North-South, South-South and triangular cooperation) committed to developing countries</p>			
Trade				
<p>17.10 Promote a universal, rules-based, open, non-discriminatory and equitable multilateral trading system under the World Trade Organization, including through the conclusion of negotiations under its Doha Development Agenda</p>	<p>17.10.1 Worldwide weighted tariff-average</p>			
<p>17.11 Significantly increase the exports of developing countries, in particular with a view to doubling the least developed countries' share of global exports by 2020</p>	<p>17.11.1 Developing countries' and least developed countries' share of global exports</p>	<p>Share of global exports (percentage)</p>	<p>Trade data from various sources, mainly World Bank's World Development Indicators (WDI),</p>	<p>0</p>

17.12 Realize timely implementation of duty-free and quota-free market access on a lasting basis for all least developed countries, consistent with World Trade Organization decisions, including by ensuring that preferential rules of origin applicable to imports from least developed countries are transparent and simple, and contribute to facilitating market access	17.12.1 Average tariffs faced by developing countries, least developed countries and small island developing States			
Systemic issues				
<i>Policy and institutional coherence</i>				
17.13 Enhance global macroeconomic stability, including through policy coordination and policy coherence	17.13.1 Macroeconomic Dashboard			
17.14 Enhance policy coherence for sustainable development	17.14.1 Number of countries with mechanisms in place to enhance policy coherence of sustainable development			
17.15 Respect each country's policy space and leadership to establish and implement policies for poverty eradication and sustainable development	17.15.1 Extent of use of country-owned results frameworks and planning tools by providers of development cooperation			
<i>Multi-stakeholder partnerships</i>				
17.16 Enhance the Global Partnership for Sustainable Development, complemented by multi-stakeholder partnerships that mobilize and share knowledge, expertise, technology and financial resources, to support the achievement of the Sustainable Development Goals in all countries, in particular developing countries	17.16.1 Number of countries reporting progress in multi-stakeholder development effectiveness monitoring frameworks that support the achievement of the sustainable development goals			

17.17 Encourage and promote effective public, public-private and civil society partnerships, building on the experience and resourcing strategies of partnerships	17.17.1 Amount of United States dollars committed to public-private and civil society partnerships			
<i>Data, monitoring and accountability</i>				
17.18 By 2020, enhance capacity-building support to developing countries, including for least developed countries and small island developing States, to increase significantly the availability of high-quality, timely and reliable data disaggregated by income, gender, age, race, ethnicity, migratory status, disability, geographic location and other characteristics relevant in national contexts	17.18.1 Proportion of sustainable development indicators produced at the national level with full disaggregation when relevant to the target, in accordance with the Fundamental Principles of Official Statistics			
	17.18.2 Number of countries that have national statistical legislation that complies with the Fundamental Principles of Official Statistics			
	17.18.3 Number of countries with a national statistical plan that is fully funded and under implementation, by source of funding			
17.19 By 2030, build on existing initiatives to develop measurements of progress on sustainable development that complement gross domestic product, and support statistical capacity-building in developing countries	17.19.1 Dollar value of all resources made available to strengthen statistical capacity in developing countries			
	17.19.2 Proportion of countries that (a) have conducted at least one population and housing census in the last 10 years; and (b) have achieved 100 per cent birth registration and 80 per cent death registration			

[1] The UN classifies SDG indicators on a scale of 1 to 3 based on methodological strength and data availability. A Tier 1 indicator is one that, “is conceptually clear, has an internationally established methodology and standards are available, and data are regularly produced by countries for at least 50 per cent of countries and of the population in every region where the indicator is relevant.” See: <https://unstats.un.org/sdgs/iaeg-sdgs/tier-classification/>

[2] Absolute target values are not strictly universal in that the UN does not provide explicit numerical values for the language it uses to describe the SDGs’ targets. For the SDG Form,

we selected numerical values for the targets based on their individual language. For example, we use a threshold of 3 percent for targets that call for elimination or eradication of large scale social phenomena like extreme poverty and hunger, which we feel captures the spirit of the target while being more realistic than 0. We use a threshold of 0 in other cases, such as disease incidence, where the goal of 100% eradication is more realistic based on historical experience. However, the form allows the user to override any target, allowing for the flexibility to override these subjective decisions.

Retrieved from "https://pardeewiki.du.edu//index.php?title=SDG_Dashboard&oldid=9289"

This page was last edited on 10 June 2020, at 17:52.