

Version 7.89 (August 9th, 2022)

The printable version is no longer supported and may have rendering errors. Please update your browser bookmarks and please use the default browser print function instead.

[PREVIOUS VERSION](#) | [INDEX PAGE](#) | [NEXT VERSION](#)

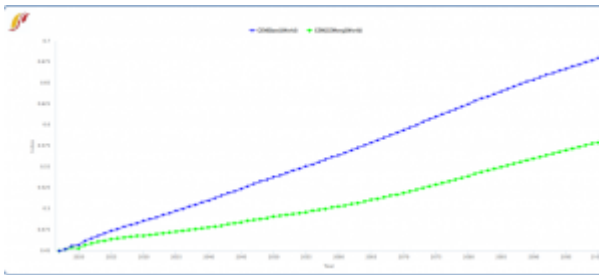
You can download IFs Version 7.89 at 7.89 VB6 version and 7.90 NET version.

Interface Updates

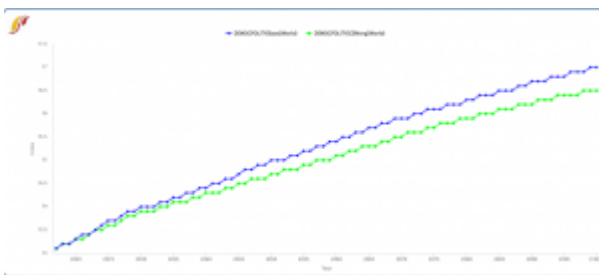
- Fix issue with Start year interaction with Vertical Line

Model Updates

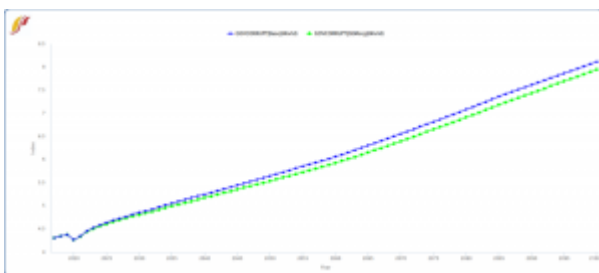
- Fix in GEM calculation, using firstyear education female term, the change produces a relative big impact in our forecast (17% up by 2100).



- This produces an increase in Global Democracy of about 3% by 2100

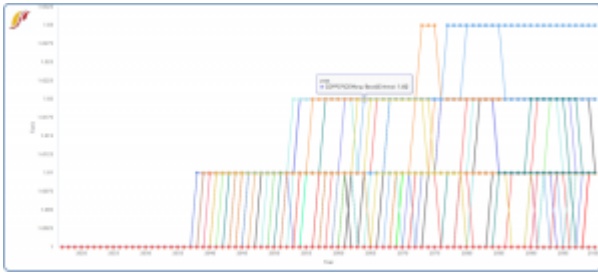


- Corruption Index increases by 2% by 2100 (greater index is less corrupt).

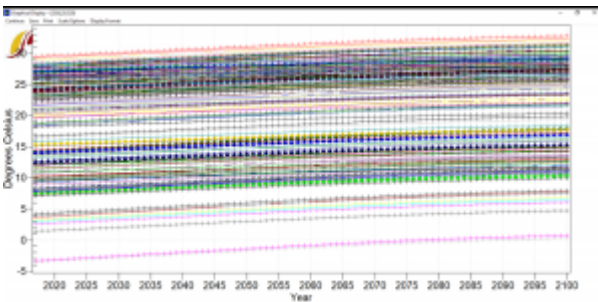


- Global MFPSC went from -0.052% to -0.049% by 2100, which minimally impacted WGDP (493.1 vs 495.3).
- Changes for individual countries GDPPCP top at 3% for Somalia, South Sudan and

Cambodia:



- Added logic to handle 2.5% limit in MALNPOPP data, allowing lower values to be computed from CLPCCV, CLPCMDER, CLPC (This logic it's also included in a special version of 7.85)
- Forecasting ENVTEMP, and creating logic to have impact on GINIDOM:



- Change to relationship between the CLIMECONIMP variable in IFs coming from the DICE formulation with the Nordhaus parameterization.

Data Updates

- 1 new table, elec production from BP
 - 3 new table, elec access estimated by UNDP
 - 12 new tables, country-level mean temperature across RCPs from IPCC AR5
 - 30 new tables, Rao & Dellink related projections based on conflict adjustment
-

Retrieved from "[https://pardeewiki.du.edu//index.php?title=Version_7.89_\(August_9th,_2022\)&oldid=11917](https://pardeewiki.du.edu//index.php?title=Version_7.89_(August_9th,_2022)&oldid=11917)"

This page was last edited on 9 November 2024, at 21:54.