

Version 8.16 (January 30th, 2024)

The printable version is no longer supported and may have rendering errors. Please update your browser bookmarks and please use the default browser print function instead.

[PREVIOUS VERSION](#) | [INDEX PAGE](#) | [NEXT VERSION](#)

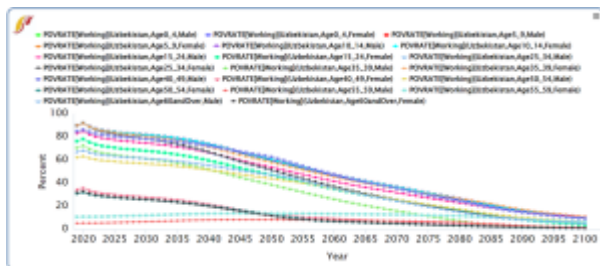
You can download IFs Version 8.16 at 8.16.

Interface Updates

- Health Pyramid was only showing default scenarios for comparison.
- Health Pyramid had a problem when selecting only one Scaling value and not all of them.
- World Variable Graphs (Lorenz curve, GINI, Histogram, etc) was not picking up other scenarios, only working run.

Model Updates

- Adding option to turn off Multi-threading.
- Education Update
- Removing HHINC, should use HHINCDIS or HHINCEARN
- Fixing POVRATE, missing categories and adding limits, Uzbekistan had a big transient, we were still using 1.90 Dollars for normalization in forecast.



Data Updates

- 13 Tables inserted & updated
 - 1 table, EdPriDuration PNG's value in 2019 has been manually fixed to 6 (was 7).
 - 9 Ed tables from Mohammod, Primary & Tertiary AdultGrads15 from WIC & UIS.
 - Old tables are renamed with BL as the suffix.
 - 3 Ed tables fixed (SecAdultGrads15 from Mohammod)
 - Aggrules in DataDict are now updated for 64 IMAGE related tables.
- Notes:
 - Changes made are based on "IFsHistSeries 8.14 20240103".
 - Reminder- CarbonEmission table

Retrieved from "[https://pardeewiki.du.edu//index.php?title=Version_8.16_\(January_30th,_2024\)&oldid=11424](https://pardeewiki.du.edu//index.php?title=Version_8.16_(January_30th,_2024)&oldid=11424)"

This page was last edited on 24 April 2024, at 23:13.