

# Version 8.52 (September 2nd, 2025)

The printable version is no longer supported and may have rendering errors. Please update your browser bookmarks and please use the default browser print function instead.

☐

## Contents

Version 8.52 (September 2nd, 2025)

- Interface Updates
- Model Updates
- Data Updates

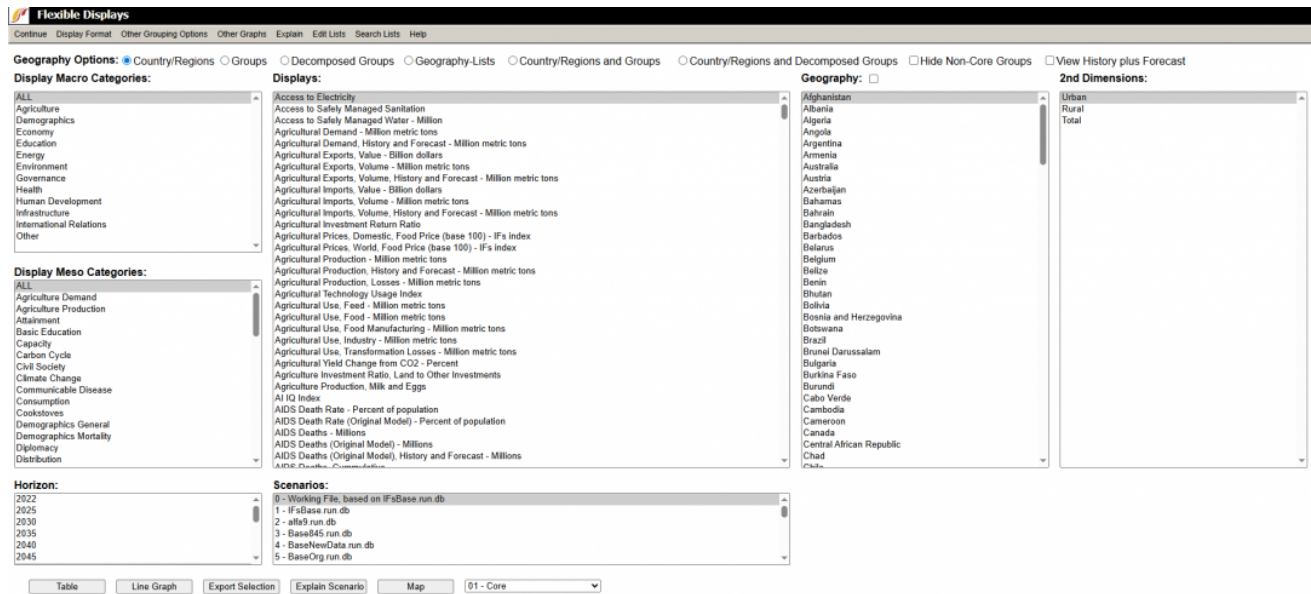
# Version 8.52 (September 2nd, 2025)

[PREVIOUS VERSION](#) | [INDEX PAGE](#) | [NEXT VERSION](#)

You can download IFs Version 8.52 at IFs 8.52.

## Interface Updates

- Added new Macro and Meso Categories to Flex Displays, also added new filters.



New Flex Displays with Macro and Meso Categories

- Fix to formulas with repeated terms, for example:  
$$\text{Probability}(\text{Cluster}_0) = e^{(-0.6128 + (1.8340 * a) + (2.2198 * b) + (1.7760 * c) + (0.7788 * (d/e)) - (2.6070 * f))} / (e^{(-0.6128 + (1.8340 * a) + (2.2198 * b) + (1.7760 * c) + (0.7788 * (d/e)) - (2.6070 * f))})$$

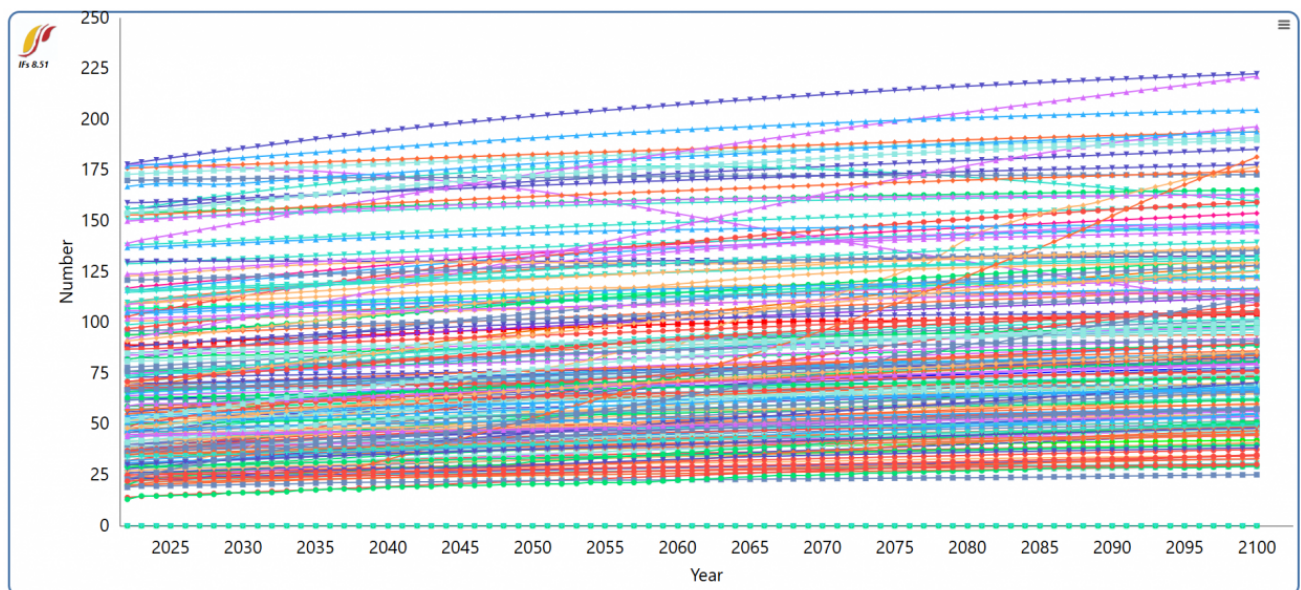
$(2.6070*f)) + e^{(-0.9064 - (1.4878*a) - (2.5714*b) - (1.9723*c) - (1.3653*(d/e)) + (2.2223*f))} + e^{(-0.7270 - (0.3462*a) + (0.3516*b) + (0.1963*c) + (0.5865*(d/e)) + (0.3847*f))}$ , this was producing repeated terms in the selection box:

CodeVar	VarName
A	
B	
B	
B	
C	
D	
D	
D	

- Removing double counting from SAM, variables with Total were being double counted.

## Model Updates

- contiguity parameter was not working for groups, like contiguity(World, World).
- Added limit to bilateral trade, it was going negative when tariffs get to 100%.
- Added Politically Relevant Dyad Security Count (PRDSEC):



## Data Updates

- IFsVar new Descriptions, new SubModule Names and Segment Names.
- Added new Variable Lists to have full list available in Flex Displays.
- 25 Tables inserted & updated in IFsHistSeries
- 3 new tables, country-year distance to development pattern cluster centers.
- 10 new tables, score and counts Character of Bilateral Interaction in the International System.

- 8 new tables, civil war onset and its impact from Pardee's Civil War data.
- 2 new tables, sovereignty states and geographic distance.
- 2 tables updated from WDI, urban population and foreign population.
- 34 Tables inserted & updated in IFsHistSeries
- 3 new tables, country-year distance to development pattern cluster centers.
- 10 new tables, score and counts Character of Bilateral Interaction in the International System.
- 8 new tables, civil war onset and its impact from Pardee's Civil War data.
- 2 new tables, sovereignty states and geographic distance.
- 2 tables updated from WDI, urban population and foreign population.
- 7 new tables, poverty tables from PIP at \$2021
- 2 new tables, GDP2021 & GDP2021PCPPP

---

Retrieved from

"[https://pardeewiki.du.edu//index.php?title=Version\\_8.52\\_\(September\\_2nd,\\_2025\)&oldid=13538](https://pardeewiki.du.edu//index.php?title=Version_8.52_(September_2nd,_2025)&oldid=13538)"

---

**This page was last edited on 10 October 2025, at 22:24.**