

# December 2016 vetting

The printable version is no longer supported and may have rendering errors. Please update your browser bookmarks and please use the default browser print function instead.

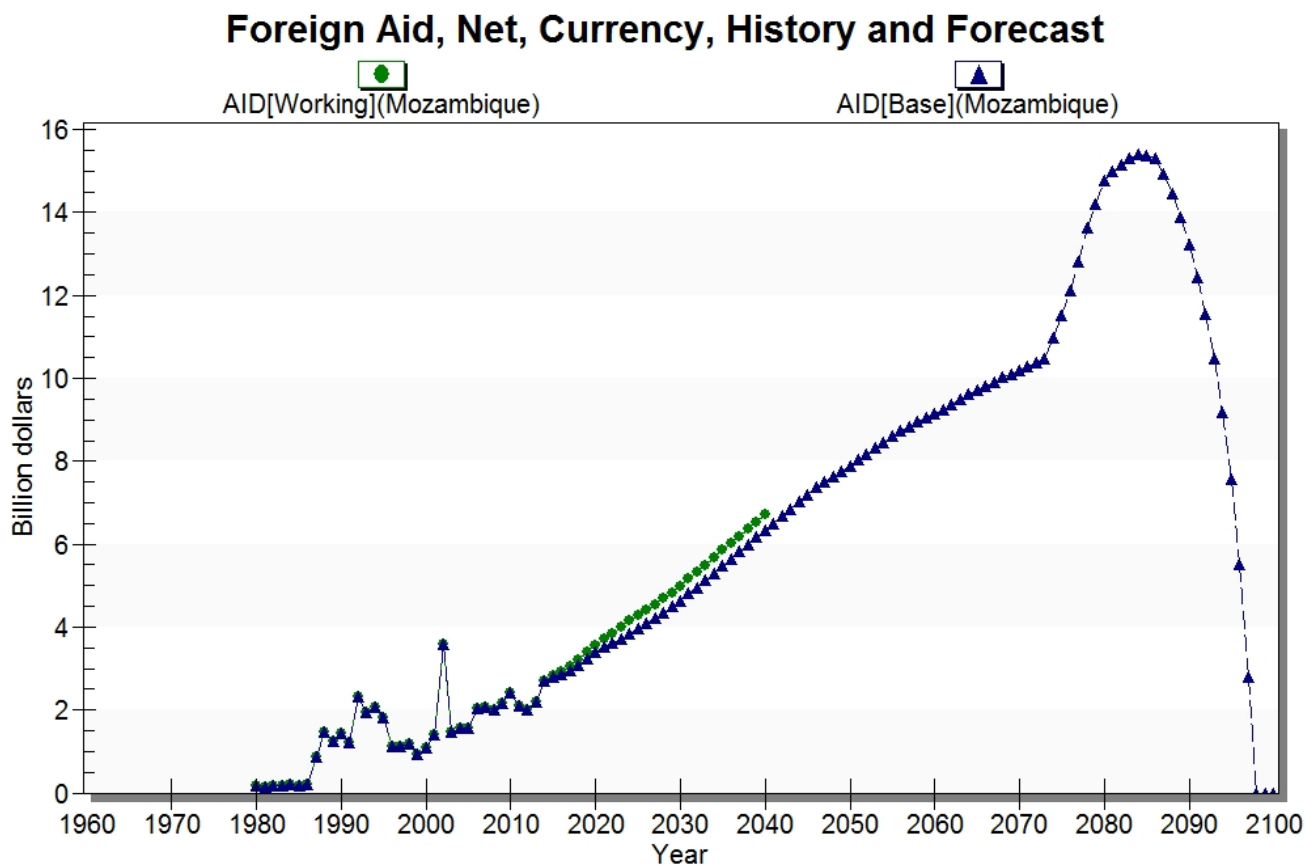


## Contents

Foreign aid vetting  
    aidrecm - new parameter  
Scenario rerun  
HIV/AIDS

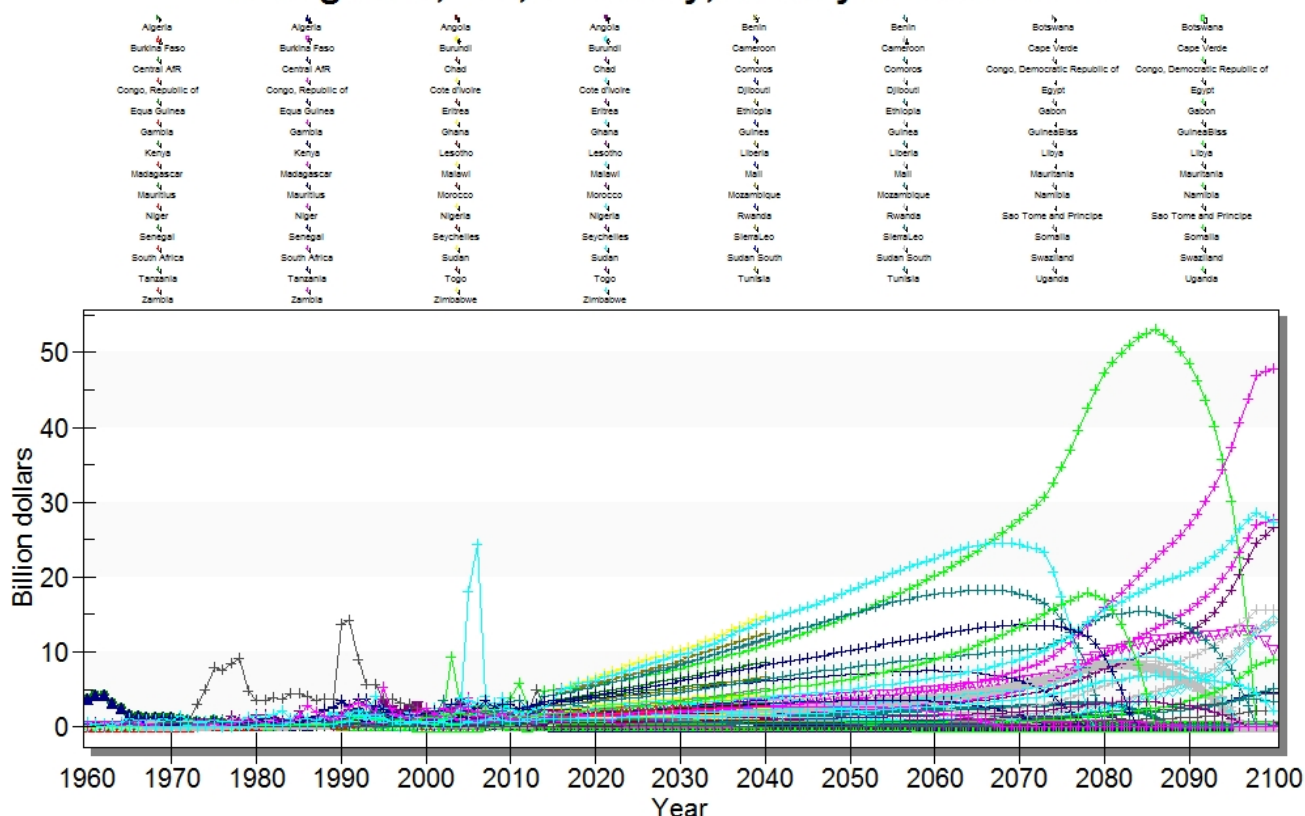
## Foreign aid vetting

When viewing absolute values, foreign AID drops off quite suddenly for many countries. There is also upward kinks in the forecast for many countries. Mohammad says this is because of a shift from convergence year. It doesn't look as drastic when viewed as a percent of GDP.



Foreign aid in Mozambique (net), IFs 7.27 B1

## Foreign Aid, Net, Currency, History and Forecast



Foreign aid in African countries (net), IFs version 7.27 B1.

## aidrecm - new parameter

Aid (foreign) receipts multiplier - Mul Base 1

Tested the "high" value for parameter by interpolating to 1.2 over 10 years for Africa. Foreign aid increase relative to the Base Case by 7.9 percent over 10 years.

## Scenario rerun

**Test of scenario run without enabling new feature:** Created a scenario where gcorruptm increases to 1.2 over 2 years (2014 to 2016) for Argentina. Checked results, went back to scenario tree and changed the parameter to 1.1 for 2016 to 2018 (interpolated over 2 years). Clicked "Run Scenario". There is no option to "reset year to 2014" nor does it alert me that the model will begin running in 2016. I enter 2018 and click "select run". The model begins running in 2014, as expected.

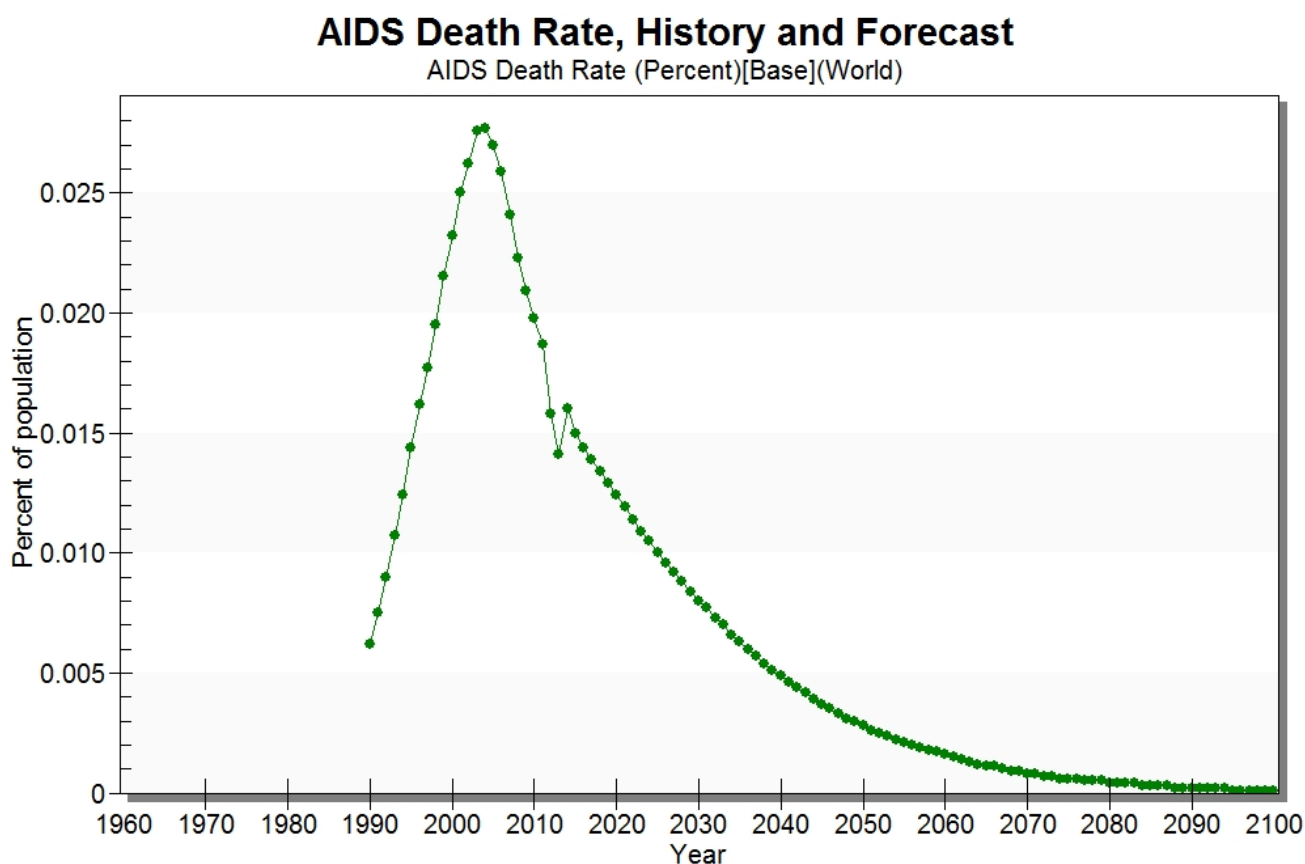
**Test of scenario with with new feature enabled:** Created a scenario where gcorruptm increases to 1.2 over 2 years (2014 to 2016) for Argentina. Checked results, went back to scenario tree and changed the parameter to 1.1 for 2016 to 2018 (interpolated over 2 years). Enabled the new feature (scenario ReRun options > avoid automatic reset of initial year to run) and clicked "run scenario". The model defaulted to begin the run in 2017, as expected.

**Test of running a "single run" without any parameter change and without feature enabled:** Clicked "scenario analysis > run > single run" and ran model to 2016. When

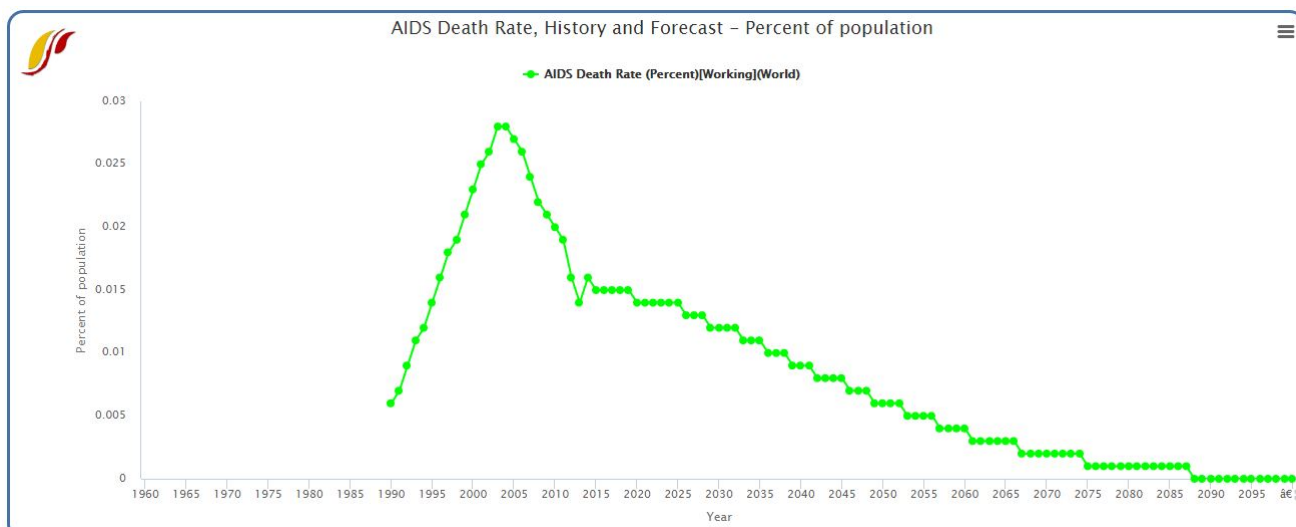
returned to the main menu, I clicked "scenario analysis > run > single run" again. Brought me to the scenario run screen, but notified me that the model had already run and that it would begin in 2017 rather than 2014.

## HIV/AIDS

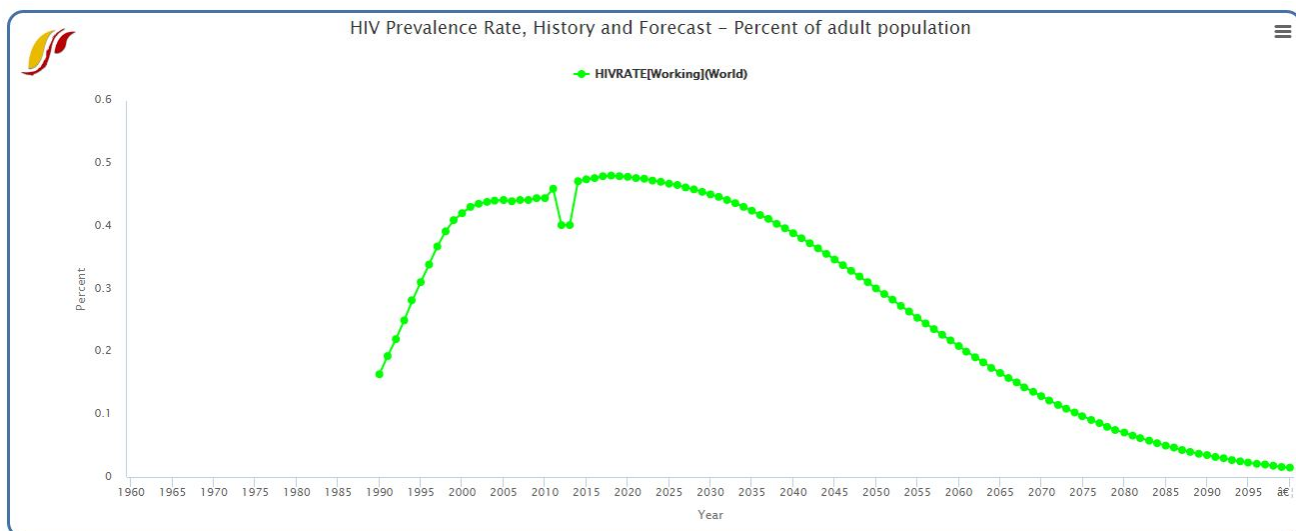
The global AIDS death rate drops much faster in 7.27 than in 7.26. This is because we've removed the "double bubble" of AIDS deaths, and because the parameter representing the technical advance of ARVs has been increased. Both of these interventions conform with the forecasts and findings from the Spectrum model. While prevalence stays higher for much longer in 7.27 for many countries (notably South Africa), globally, HIV prevalence does not change dramatically.



AIDS death rate (percent of population), IFs 7.27 B1



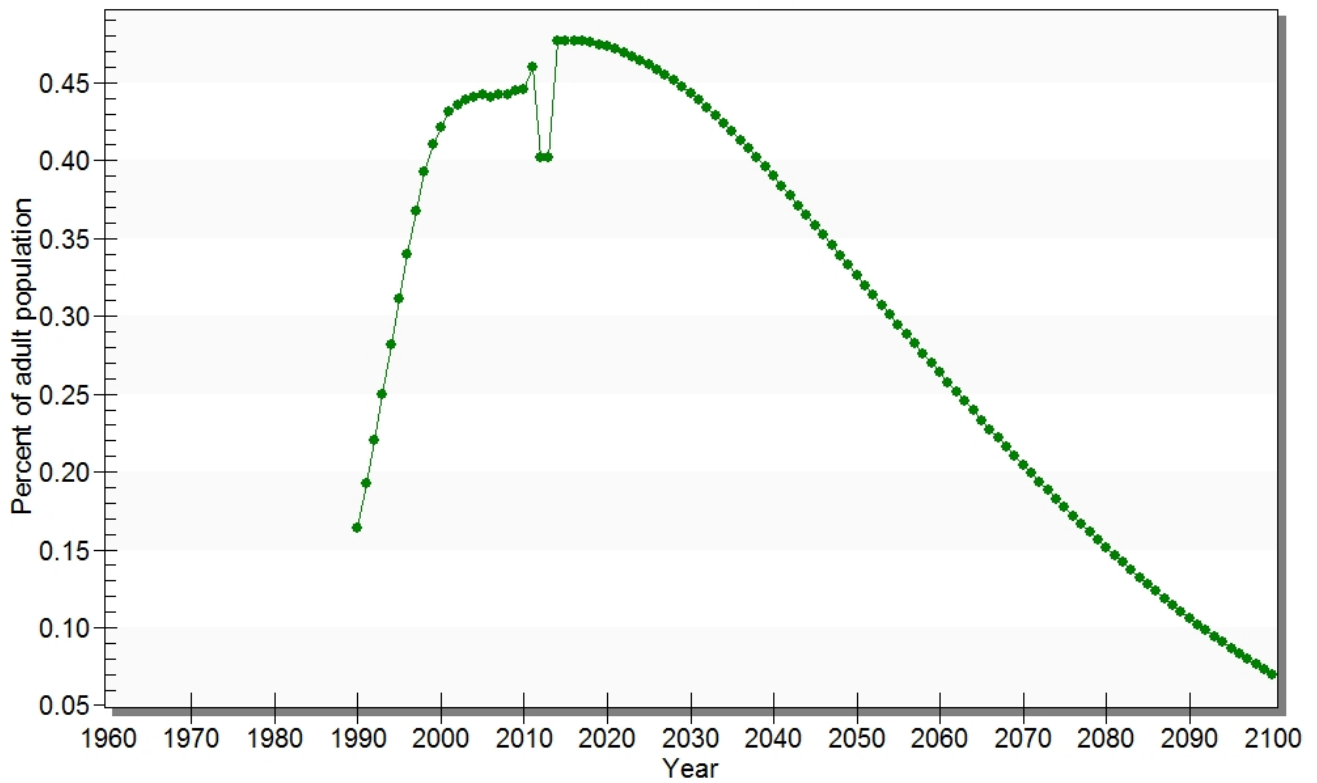
AIDS death rate (as percent of population), IFs 7.26



Prevalence of HIV (percent of population), IFs 7.26

## HIV Prevalence Rate, History and Forecast

HIVRATE[Base](World)



HIV prevalence rate (percent of population), IFs 7.27 B1

---

Retrieved from "[https://pardeewiki.du.edu//index.php?title=December\\_2016\\_vetting&oldid=1540](https://pardeewiki.du.edu//index.php?title=December_2016_vetting&oldid=1540)"

---

This page was last edited on 9 December 2016, at 18:36.